

Glass and Material Lifts



Norbert Wienold GmbH



- Founded by **Norbert Wienold** in **1987**.
- Family owned company.
- German limited liability company (GmbH) in **Emsbüren, Germany**.
- Medium-sized company with more than 30 employees.
- **Five Customer Service Centres** across Germany.
- Specialised in material and personnel lifting equipment, scissor lifts, articulated and telescopic booms.
- All our lifts are notably favored in the rental market, especially in the **UK, France, Australia, Hong Kong and Canada**

More than 30 years of lifting platform experience



SLK
Superlift with counterweights 3



WLU-P
Wienold Lift Universal Premium 5



GML800+/500+
Glass and Material Lift 7



GML-C
Glass and Material Lift Compact 9



MFC
Mini Floor Crane 11



Accessories
Forks, booms, winches, suction units 13

SLK Superlift with counterweights

A lift from the start. The Superlift with counterweights is one of our first in-house developments. Robust and vigorous, the Superlift puts its skills to the best while working with heavy loads, for exhibition, installation of facades, windows, heating, ventilation and more.

The Wienold Superlift with counterweights is an excellent help to raise loads over obstacles, directly to walls or to levels above.

For this, the outriggers of the SLK are aligned to the rear and arrange lifting accessories at the front side. In order to obtain the safe working load of a maximum of 450 kg, a weightbox with 8 counterweights of 16 kg each and a standard fork. Models SLK 20 and 25 include two additional lateral outriggers with small castors supplied.

To offer optimum handling characteristics the SLK is equipped with four large swivel castors, the front ones with integrated brakes.

To meet your working needs the SLK is available in four different heights from 2.00 m up to 7.90 m. Depending on the model, the payloads vary between 300 kg and 450 kg.

Includes: Chassis with 2 transport wheels, two large casters with brakes and two foldable outriggers. Also available with two large steering wheels.

Furthermore, the Superlift has a high-quality Genie mast system which includes a safety brake, 1-gear winch, adjustable loading assistance, weight box with 8 counterweights of 16 kg each and a standard fork. Models SLK 20 and 25 include two additional lateral outriggers with small castors supplied.

Ideal accessories to the Superlift are our suction units. They are precisely adapted to the carriage of our lifts. Perfect to assemble easily heavy glass or wind-screens and large panels with a smooth surface. Working quickly, easily and without physical exertion - no problem by using the Wienold SLK.



Models / Equipment



SLK:

- with 8 counterweights and box
- 2 outriggers backwards
- handle with loading-casters
- 1-gear winch, standard fork
- lateral outriggers (series 20 u. 25)

Lifting heights:

- Series 10:** 3,50 m at 450 kg payload max.
- Series 15:** 5,00 m at 360 kg payload max.
- Series 20:** 6,50 m at 360 kg payload max.
- Series 25:** 7,90 m at 295 kg payload max.

Options:

- 3-gear reduction gearbox for operation by crank, drill or cordless screwdriver
- lateral outriggers for series 10 - 15
- handle
- crane boom

SLK Superlift with counterweights



Technical data

Technical data	SLK / 10	SLK / 15	SLK / 20	SLK / 25
Lifting heights:	3,50 m	5,00 m	6,50 m	7,90 m
Transport position - height:	1,98 m	1,98 m	1,98 m	1,98 m
- length:	0,90 m	0,90 m	0,96 m	1,02 m
- width:	0,80 m	0,80 m	0,80 m	0,80 m
Working position - height:	1,98 m	1,98 m	1,98 m	1,98 m
- length:	1,50 m	1,80 m	2,22 m	2,22 m
- width:	0,80 m*	0,80 m*	0,80 m*	0,80 m*
Ground clearance min.:	0,11 m	0,11 m	0,11 m	0,11 m
Payload max. **:	450 kg	360 kg	360 kg	295 kg
Own weight:	256 kg	284 kg	316 kg	334 kg
Weight without attachment parts:	122 kg	150 kg	182 kg	200 kg

* max. 2,22 m with lateral outriggers

** load center 36 cm

WLU-P Wienold Lift Universal Premium

The Wienold Lift Universal Premium is a multi-talent. We have integrated many of our customers' requests and suggestions into this system; this enables it to more flexibility.

The WLU-P is strong and compact. From 1.68 m to 1.74 m in transport position. Thus, the WLU Premium also fits into an estate car to make transportation more comfortable.

On construction side, the WLU-Premium convinces with versatility and power. 400 kg safe working load up to 4 m working height. At the maximum working height of 5.15 m the WLU-P enables 360 kg safe working load.

A WLU-P can be loaded by one person in the twinkling of an eye and brought into working position. It is just as quickly converted and returned to the transport position. A jack is part of the basic equipment which makes it easier to convert the lift. The outriggers are fixed to the chassis with spring bolts so that no tools are required when assembling, converting or dismantling.

The WLU Premium is extremely versatile for several applications by using three different outrigger sets.

The slimmest design variant, the WLU-P / Ks, requires only a very small storage space in the working position. It can be set up quickly: Short T-chassis at the front, short outriggers at the rear, the box with nine counterweights on board - ready to go.

A WLU-P / K is created by replacing the short outriggers at the rear with the long ones. To conclude only six weights must be added to the box.

The WLU-P / K offers a second body variant, the WLU-P / L, simply by changing the outriggers: the two long outriggers are to be put to the front, the T-chassis to the rear. Counterweights are not necessary for this body variant.

The many possible applications are convincing. There is hardly a more space-saving, simpler and faster way to work. Limited space, working overhead, lifting heavy loads on walls, aligning, assembling and much more: no problem for the small 3 in 1 power pack.

The lift brackets ensure that all components are within easy reach in the transport position.



Models / Equipment



WLU-P / Ks:

- short version with 9 counterweights and box
- T-chassis in front, 2 short outriggers backwards
- handle with loading casters are integrated
- bracket for outriggers in the chassis
- 1-gear winch standard load fork
- (option : crane boom)

Lifting heights:

- Series 2.8:** 2.85 m at 400 kg payload max.
- Series 4.0:** 4.00 m at 400 kg payload max.
- Series 5.1:** 5.15 m at 360 kg payload max.



WLU-P / K:

- long version with 6 counterweights and box
- T-chassis in front, 2 long outriggers backwards
- handle with transport wheels are integrated
- bracket for outriggers in the chassis
- 1-gear winch standard load fork
- (option : crane boom)

Extra equipment:

- 3-step drill kit for operation by crank handle, drill or cordless screwdriver
- lateral outriggers, crane boom



WLU-P / L:

- long version without counterweights
- T-chassis backwards 2 long outriggers in front

Special feature:

The components of the WLU-P / K permit the construction of the second variation: WLU-P / L, while simply the positions are exchanged by outriggers and T-chassis. No counterweights are necessary for WLU-P / L.

WLU-P Wienold Lift Universal Premium



Technical data

K-series (long outriggers back)	WLU-P / K 2.8	WLU-P / K 4.0	WLU-P / K 5.1
Lifting heights (standard fork on top):	2,85 m	4,00 m	5,15 m
Transport position -height / length / width:	1,68 / 0,63 / 0,50 m	1,68 / 0,63 / 0,50 m	1,68 / 0,63 / 0,50 m
Working position - height / length / width:	1,74 / 1,85 / 0,75 m**	1,74 / 1,85 / 0,75 m**	1,74 / 1,85 / 0,75 m**
Payload max. (load centre with 36 cm):	400 kg	400 kg	360 kg
Own weight:	255 kg	271 kg	287 kg
Weight without attachment parts:	113 kg	129 kg	145 kg
Ks-series (short outriggers back)	WLU-P / Ks 2.8	WLU-P / Ks 4.0	WLU-P / Ks 5.1
Lifting heights (standard fork on top):	2,85 m	4,00 m	5,15 m
Transport position -height / length / width:	1,68 / 0,63 / 0,50 m	1,68 / 0,63 / 0,50 m	1,68 / 0,63 / 0,50 m
Working position - height / length / width:	1,74 / 1,16 / 0,75 m**	1,74 / 1,16 / 0,75 m**	1,74 / 1,16 / 0,75 m**
Payload max. (load centre with 36 cm):	400 kg	400 kg	360 kg
Own weight:	289 kg	305 kg	321 kg
Weight without attachment parts:	113 kg	129 kg	145 kg
L-Series(long outriggers front)*	WLU-P / L 2.8	WLU-P / L 4.0	WLU-P / L 5.1
Lifting heights (standard fork on top):	2,85 m	4,00 m	5,15 m
Transport position -height / length / width:	1,68 / 0,63 / 0,50 m	1,68 / 0,63 / 0,50 m	1,68 / 0,63 / 0,50 m
Working position - height / length / width:	1,74 / 1,85 / 0,75 m**	1,74 / 1,85 / 0,75 m**	1,74 / 1,85 / 0,75 m**
Payload max. (load centre with 36 cm)	400 kg	400 kg	360 kg
Own weight:	149 kg	165 kg	181 kg
Weight without attachment parts:	113 kg	129 kg	145 kg

* WLU-P / L is the second configuration of the WLU / K without counterweights

** max. 1,70 m with lateral outriggers

GML Glass and Material Lift

The new GML800+/500+ lift series redefines the handling of heavy loads in a completely new way. The range offers unparalleled safe working loads for material lifts of this type.

The GML range brings the new development of an electric drive system with it. AC and DC models have powerful electric winches that allow 900 kg to be lifted to a height of 3,50 m and up to 500 kg to a height of 9,10 m at the touch of a button.

The manual (M) model range has identical lifting and payload capacities in comparison to the powered range. The worm gear winch comes complete with an adjustable crank handle which, when extended fully, enables heavier loads to be lifted more easily.

A truly amazing accessory that can be fitted to the manual range as an optional extra is the 3-step drill kit which can be operated with a crank handle, drill or cordless screwdriver. This totally eliminates the need for manual handling of the winch which saves both time and effort.

The GML800+/500+ AC and DC are operated by a simple remote control that is magnetised for storage on any steel part of the machine.

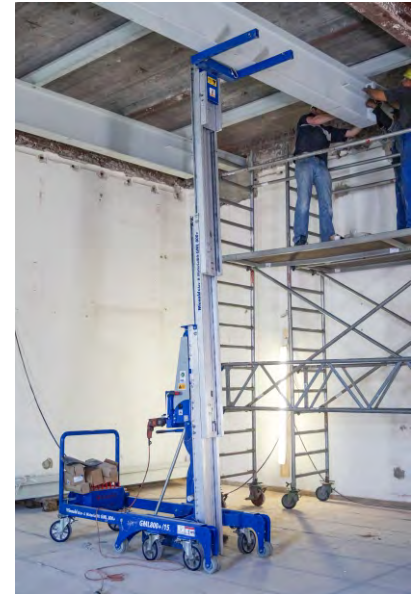
The battery pack and counterbalance weights on the DC machine are stored in a self-contained trolley that is ingeniously attached to the stabilising legs of the GML800+/500+ and comes complete with an integrated charger.

Safety is an important aspect while handling a payload of 900 kg. We have therefore completely redesigned, widened, reinforced and equipped the mast system with a double safety brake.

The chassis has also been completely redesigned and adapted to the enormous payload.

Pulleys, bearings, ropes and many other components are generously dimensioned and designed for durability. In the electric models, limit switches ensure safe working. They switch off the winch at the highest and lowest points. The winch also stops if the tension on the rope is too low.

On both the AC and DC models, the cable control system is designed to allow the operation of additional powered accessories such as the electric telescopic boom (ETB).



Drive : 3- step drill kit

Models / Equipment



GML / STD / M:

- long version without counterweights
- 2 long outriggers backwards
- handle for positioning is integrated
- 1-speed worm gear winch
- load fork, in width adjustable
- lateral outriggers (series 20 and 25)

Extra equipment:

- 3- step drill kit for operation by crank handle, drill or cordless screwdriver
- lateral outriggers for series 10-25



GML / K / AC:

- long version with 12 counterweights and box
- 2 long outriggers backwards
- handle for positioning is integrated
- separate handle at weight box
- 230 V of hoist impulse with cable remote control
- load fork in width adjustable
- lateral outriggers (series 20 and 25)

Impulses:

- 1. AC:** Electric winch 230/110 V
- 2. DC:** Electric winch 24 V
- 3. M:** Worm gear winch



GML / K / DC:

- long version by battery carriage
- 2 long outriggers backwards
- handle for positioning is integrated
- mobile battery carriage incl. battery charger
- 6 counterweights
- 24 V of hoist impulse with cable remote control
- lateral outriggers (series 20 and 25)

Lifting heights:

- Series 10:** 3,30 m at 900 kg payload max.
- Series 15:** 4,70 m at 850 kg payload max.
- Series 20:** 6,10 m at 800 kg payload max.
- Series 25:** 7,50 m at 800 kg payload max.
- Series 30:** 9,10 m at 500 kg payload max.



Technical data

M-series (worm gear winch)	GML / 10 / STD / M	GML / 15 / STD / M	GML / 20 / STD / M	GML / 25 / STD / M	GML / 30 / STD / M
Lifting heights (standard fork on top):	3,30 m	4,70 m	6,10 m	7,50 m	8,80 m
Transport position - height / length / width:	1,98 / 1,10 / 0,81 m	1,98 / 1,10 / 0,81 m	1,98 / 1,10 / 0,81 m	1,98 / 1,10 / 0,81 m	1,99 / 1,44 / 0,81 m
Working position - height / length / width:	1,98 / 1,94 / 0,81 m*	1,98 / 1,94 / 0,81 m*	1,98 / 1,94 / 0,81 m*	1,98 / 1,94 / 0,81 m*	1,99 / 2,03 / 0,81 m*
Payload max. (load centre with 28 cm):	900 kg	850 kg	800 kg	800 kg	500 kg
Own weight:	282 kg	318 kg	357 kg	418 kg	480 kg
AC-series (~230 Volt)	GML / 10 / K / AC	GML / 15 / K / AC	GML / 20 / K / AC	GML / 25 / K / AC	GML / 30 / K / AC
Lifting heights (standard fork on top):	3,30 m	4,70 m	6,10 m	7,50 m	8,80 m
Transport position - height / length / width:	1,98 / 1,10 / 0,81 m	1,98 / 1,10 / 0,81 m	1,98 / 1,10 / 0,81 m	1,98 / 1,10 / 0,81 m	1,99 / 1,44 / 0,81 m
Working position - height / length / width:	1,98 / 1,94 / 0,81 m*	1,98 / 1,94 / 0,81 m*	1,98 / 1,94 / 0,81 m*	1,98 / 1,94 / 0,81 m*	1,99 / 2,06 / 0,81 m*
Payload max. (load centre with 28 cm) :	900 kg	850 kg	800 kg	800 kg	500 kg
Own weight:	518 kg	555 kg	619 kg	655 kg	691 kg
Weight without attachment parts:	326 kg	363 kg	427 kg	463 kg	499 kg
DC-series (24 Volt)	GML / 10 / K / DC	GML / 15 / K / DC	GML / 20 / K / DC	GML / 25 / K / DC	GML / 30 / K / DC
Lifting heights (standard fork on top):	3,30 m	4,70 m	6,10 m	7,50 m	8,80 m
Transport position - height / length / width:	1,98 / 1,00 / 0,81 m	1,98 / 1,00 / 0,81 m	1,98 / 1,00 / 0,81 m	1,98 / 1,00 / 0,81 m	1,99 / 1,44 / 0,81 m
Working position - height / length / width:	1,98 / 2,14 / 0,84 m*	1,98 / 2,14 / 0,84 m*	1,98 / 2,14 / 0,84 m*	1,98 / 2,14 / 0,84 m*	1,99 / 2,32 / 0,84 m*
Payload max. (load centre with 28 cm) :	900 kg	850 kg	800 kg	800 kg	500 kg
Own weight:	530 kg	566 kg	630 kg	666 kg	702 kg
Weight without attachment parts:	309 kg	345 kg	409 kg	445 kg	481 kg

* max. 2,80 m with lateral outriggers

GML/C Glass and Material Lift Compact

The Glass and Material Lift Compact (GML-C) is the newest development within our Glass and Material Lift product range.

The idea was to develop a more compact version of our top seller product, the GML.

The working position has been decreased in comparison to the GML (M/AC) by 40 cm in length. The width in the transport position is merely 78 cm so that the GML-C fits in every elevator. The height of the GML-C is less than 1,90 m, so that the lift is suitable for all common door heights and widths.

The compact size of this glass and material lift enables work in a confined area. The "piano wheels" allow a considerable movability for precise adjustments of the working position. The GML-C can as well be moved sideways and brought into the needed positions.

The Safe Working Load amounts to 600 kg* with two counter-weight boxes and 800 kg* with four boxes. The GML-C can therefore easily be transferred from a 600 to an 800 kg version just by adding two extra boxes.

The lateral mounting device for the additional weight boxes can be dismantled.

For more stability lateral outriggers are standard in each version.

The lifting height in both versions amounts to 7,10 m (standard fork on top).



Models / Equipment



- version with 2 counterweight boxes
- SWL up to 600 kg
- 3- step drill kit for operation by crank handle, drill or cordless screwdriver
- lateral outriggers



- version with 4 counterweight boxes
- SWL up to 800 kg
- 3- step drill kit for operation by crank handle, drill or cordless screwdriver
- lateral outriggers



- standardly equipped with "piano wheels", which allow a high degree of mobility

Available from July 2019



Technical data

GML-Compact	GML-C / 600	GML-C / 800
Lifting heights (standard fork on top):	7,10 m*	7,10 m*
Transport position - height / length/ width:	1,89 m / 1,31 m / 0,78 m	1,89 m / 1,31 m / 0,78 m
Working position - height / length / width**:	1,89 m / 1,53 m (1,31 m*** / 0,90 m	1,89 m / 1,53 m (1,31 m*** / 1,14 m
Payload max. (load centre with 28 cm):	600 kg*	800 kg*
Own weight:	904 kg	1428 kg
Weight without attachments:	412 kg	412 kg

* Preliminary figures, subject to final verification.

** Without lateral outriggers or attachments.

*** Push bar turnable to the front.

Smaller units available on request

MFC Mini Floor Crane

The Mini Floor Crane (MFC) is one of our new developments. The MFC is a manual crane with telescope. It lifts loads up to 900 kg to a maximum height of 2.90 m.

The MFC / K is the long version with backward straightened outriggers which are equipped with two boxes incl. 14 counterweights in each case. Thus carries of the MFC static loads to 900 kg certainly at 2.90 m hook height. With full display of 1.40 m, 410 kg payload remains.

The MFC / Ks is the short version without outriggers. This has the advantage that it requires only 0.65 m x 1.20 m of floor space. Thus, the MFC / Ks performs well even in confined spaces: The MFC / Ks lifts 745 kg to 2.90 m hook height. With a full extended boom of 1.40 m, it is still an impressive 160 kg.

The MFC / K and MFC / Ks are also approved for dynamic loads according to DIN 15019-2, EN 13001-1, EN 13001-2.

The telescope is 8-fold adjustable in 14 cm of steps, from 0.26 m to 1.40 m of maximum display (before wheel).

The high range is particularly advantageous when obstacles or a limited payload (e.g. of a balcony) prevents direct access. Loads are lifted with a few strokes using a powerful lifting cylinder.

The lowering can be precisely controlled via a handwheel and locks automatically when released.

For outdoor work, the MFC can be equipped with additional lateral outriggers to ensure high stability under wind load.

In order to achieve a very low ground pressure, the MFC can be converted to outdoor tyres in just a few simple steps.

This prevents sagging on loose ground and ensures optimum distribution of forces on the ground.



Models / Equipment



MFC / K:

- Mini Floor Crane with counterweights
- 2 boxes, each with 14 counterweights
- separate handle
- 2 outriggers backwards
- telescope boom: 8-fold adjustable, in 14 cm of steps



MFC / Ks (Shorty):

- Mini Floor Crane with counterweights (Shorty)
- 2 boxes, each with 14 counterweights
- separate handle
- telescope boom 8-fold adjustably, in 14 cm of steps



Extra equipment:

- front axle with outdoor tyres
- lateral outrigger

Accessories

- electric winch with remote control
- various suction units

MFC Mini Floor Crane



Technical data

Technical data	MFC / K	MFC / Ks
Lifting heights:	2,90 m	2,90 m
Transport position -height	1,80 m	1,80 m
-length	1,20 m	1,20 m
-width	0,65 m	0,65 m
Working position -height	1,98 m	1,98 m
-length	2,14 m	1,20 m
-width	0,65 m*	0,65 m*
Telescopic extended:	0,14 m	0,14 m
Telescope boom length max.:	1,40 m	1,40 m
Payload statically max. (distance before wheel: 40 cm):	900 kg	555 kg
Payload dynamically max. (distance before wheel: 40 cm):	750 kg	463 kg
Own weight:	644 kg	618 kg
Weight without attachment parts:	160 kg	160 kg

* max. 2,65 m with lateral outriggers

Payload		MFC / K	MFC / Ks
Telescopic-extension (step)	Distance crane hook front wheel	with 2 Boxes (28x 16 kg)	with 2 Boxes (28x 16 kg)
1	260 mm	900 kg	745 kg
2	400 mm	900 kg	555 kg
3	540 mm	880 kg	455 kg
4	700 mm	740 kg	365 kg
5	840 mm	645 kg	310 kg
6	980 mm	565 kg	275 kg
7	1.120 mm	500 kg	240 kg
8	1.260 mm	455 kg	215 kg
9	1.400 mm	410 kg	160 kg

Forks, outriggers, winches



3-step drill kit

The 3-step drill kit for operation by crank handle, drill or cordless screwdriver. The gear is simply mounted on the worm gear winch. Lifts without worm gear winch must be reequipped.



Electric manual telescopic boom

Can be telescoped manually in three positions. Further telescoping is done hydraulically by remote control. Manual and hydraulic extension in 20 cm steps adjustable. The extension length is between 42 - 82 cm.



Adjustable load forks

They offer the advantage to be able to put them optimally on various loads. The forks are adjustable hinged and multistage in width and length.



Electric manual telescopic boom - swivel boom

Are identical concerning functions and qualities with the EMTB. In addition, it can be swiveled at both sides by remote control.



Adjustable crane booms

Depending on the model, adjustable crane booms are available in various multi-stage adjustable versions. Special lengths possible.



Mount winch

To be used in combination with crane boom. It comes in handy if no lift is available or if loads do not fit in to the stairwell or elevator. It carries loads by button pressure up and down where by load-carrying capacity and rope length are dependent on the application.

Models / Technical data

Forks, boom and hoists are not usable in all Wienold Glass and Material Lifts.

* The usable load capacity of the load handling attachments depends on the load capacity of the lift used.

3-step drill kit



i Not for MFC

Reduction: 6:1, 2,5:1, 1:1
Drive: crank handle, cordless screwdriver, drilling machine
Exception: mounting on or with worm gear winch

EMTB Electric Manually Telescopic Boom



i Not for MFC

Payload*: 500 kg
Extension: 42 - 82 cm
Telescope: with cable control
Own weight: 30 kg
Exception: extension 20 cm manual, 20 cm electric

Crane fork



i Not for MFC

Payload*: depending on lift
Own weight: 32 kg
Width adjustable: 54 - 64 - 74 cm
Length adjustable: 70 - 88 - 104 - 120 cm
Exception: fork teeth 90° folding

EMTB-S Electric Manually Telescopic Boom - Swivel



i Not for MFC

Payload*: 500 kg
Extension: 42 - 82 cm
Telescope: with cable control
Own weight: 35 kg
Exception: extension 20 cm manual, 20 cm electric, lateral 5° swiveling

Crane boom



i Not for MFC

Payloads*: depending on lift
Own weight: 13 kg (20 kg*)
Extension: 41 - 50 - 59 - 65 cm (30 - 42 - 52 - 62 cm*)
Telescope: 4-fold manual

Cable winch



Payload*: 500 kg
Cable length: 29 m
Own weight: 30 kg



The **Bus suction unit** with swimming stored suction plates is ideal for the sure admission and exact assembly of curved glass.



The **Automotive** suction unit was developed for operating at the GML. It is supplied with energy by the lift and is suited ideally for overhead glazing, 90°tiltable by remote control. The frame can be extended by 6 to 8 suction plates.



The **Belt suction unit** has two pairs of stiff suction plates which are fastened to belts. They can be positioned variably.



The **Compactliner** is convincing by his compact construction. It offers high load-carrying capacity on small surface. The functions sucking, solving and rotating are operated by remote control.



The **Screenbutler** is ideal for overhead glazing. The frame can be extended by 4 to 6 suction plates at the outer ends. Well for long, narrow glass. For the assembly of rectangular glass, the suction cups can be also arranged in the shape of a cross.



The **Slimliner** is the lightest suction unit with 900 kg capacity. This creates a large overall payload. It combines high capacity with flexibility. Thanks to the 16-cm- flat construction the slimliner allows assembling glass in narrow areas. The suction unit can be extended by 6 to 12 suction plates what doubles capacity from 450 to 900 kg.

The glass suction units are not usable in all Wienold Glass and Material Lifts,
* The usable load capacity of the load handling attachments depends on the load capacity of the lift used.

Models / Technical data

Bus suction unit DSK2



Payload*: max. 250 kg
Frame: 6 suction cups in 2 rows
Power: 12V battery pump with charger
Functions: suck / release with cable control
Turn: 360° manual
Tilt: 90° manual
Own weight: ca. 45 kg

Belt suction unit G2



Payload*: max. 300 kg
Frame: 2x 2 suction cups on belts
Power: 12V battery pump with charger
Device: inclusive: charger, cable control
Functions: paired, position freely selectable
Functions: suck / release with cable control
Own weight: ca. 30 kg

Screenbutler DSKE2



Payload*: max. 450 kg
Frame: 4 suction cups in rows
Device: 4 + 1, 4 + 2
Power: 12V battery pump with charger
Functions: suck / release with cable control
Turn / tilt: 360° / 90° manual
Own weight: ca. 60 kg max.

Automotive GA2



i only for GML/AC and DC

Payload*: max. 500 kg
Frame: 6 suction cups in 3 rows
Device: 6 + 2
Power: 24V pump with charger
Functions: suck / release with remote control
Turn / Tilt: 360°/ 90° with remote control
Right / left: 20° with remote control
Own weight: ca. 150 kg
Exception: 3 axes controlled by remote control

Compactliner DSLMH2

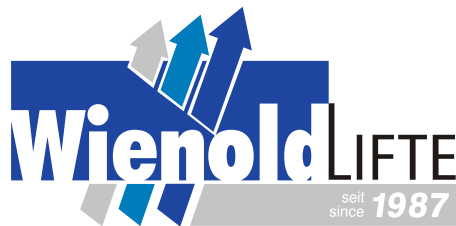


Payload*: max. 1.000 kg
Frame: 6 suction cups in 3 rows
Device: 6 + 2, 6 + 4
Power: 12V battery pump with charger
Functions: suck / release with cable control
Turn / tilt: 360° with cable control / 90° manual
Own weight: max. 250 kg (10 cups)

Slimliner DSZ2



Payload: max. 1.500 kg
Frame*: 6 suction cups in 2 rows
Device: 6 + 2, 6 + 4, 6 + 6
Power: 12V battery pump with charger
Functions: suck / release with cable control
Turn / tilt: 360° / 90° manual
Own weight: max. 250 kg max. (12 cups)



Norbert Wienold GmbH

Material- und Personenlifte

Industriegebiet Waldstr. 35 a
D-48488 Emsbüren

Tel. +49 (0) 59 03 - 93 94-0

Fax +49 (0) 59 03 - 93 94-50

eMail: info@wienold-lifte.de

Wienold-LIFTE.de

Service centres: Emsbüren | Walsrode | Brandenburg | Leverkusen | Munich

