



Mini Excavators  
**XE55E**



Rated Power: 31.2kw  
Operating Weight: 5.7t  
Standard Bucket Capacity: 0.16m<sup>3</sup>





## INTRODUCTION OF XCMG

Founded in 1943, XCMG is a multinational corporation with the most comprehensive range of competitive, influential products in the construction machinery industry. Our business covers eight key areas: construction machinery, heavy trucks, mining machinery, sanitation machinery, machinery components, construction, finance, and the ICT industry.

XCMG has established a global R&D system with a total of six centers across China, the US, Germany, Brazil and India, with China national technology center at its core. In addition to a number of manufacturing bases across China, the US, Germany, the Netherlands, Poland, Austria, Brazil, India, and Uzbekistan, we possess two complete machine brands (XCMG, Schwing), and several component brands including FT, AMCA, and Wika. It is the strength of this global R&D system and manufacturing operations that has made XCMG the industry-leading global construction equipment manufacturer that it is today.

For more than 30 years, XCMG has been sowing the seeds of overseas development as the No. 1 exporter in China's construction machinery industry. Today, we have 42 branches and offices, 315 distributors, 526 contractors in 188 countries and regions worldwide.

## XCMG IN EUROPE

Since its inception in 2012, in these years of quick development in Europe, XCMG has gradually established a completed system including R&D development, local distribution network, supply chain management and an integrated customer services center. Nowadays, with 4 branches, XCMG has 178 multinational employees in Europe, of which more than 50% are R&D engineers:

ERC: XCMG European Research Center GmbH

EPC: XCMG European Purchasing Center GmbH

ESS: XCMG European Sales and Services GmbH

Our local professional R&D team and cutting-edge innovation platform guarantee that our products are carefully crafted to the smallest detail according to diverse needs of European customers.



► **A passion for performance**

Combining the power for demanding jobs and the versatility to work in any condition, the XE55E is ready to take on any challenge. This advanced 5.7 tonnage machine is designed with excellent stability to work efficiently even where space is confined. Versatility is greatly enhanced with two auxiliary circuits as standard and precise oil flow control. With upgraded digging and lifting power and smoother travel performance, this XE55E truly has it all.

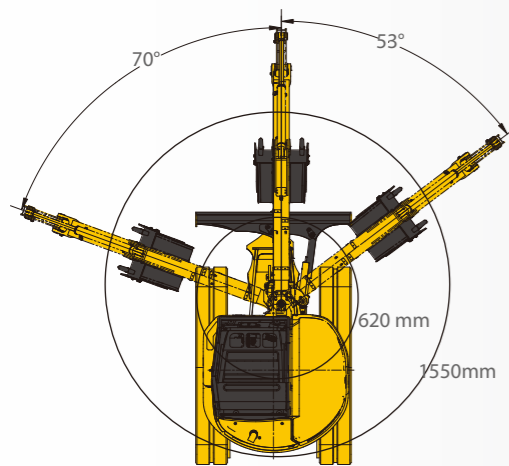
- Kubota V2403 high pressure direct injection engine, along with EGR, DOC and DPF technology, and excellent matching of hydraulic system provides high operating efficiency and fuel economy.
- Rexroth's improved load sensing hydraulic system ensures smoother operation, regardless of load size. It allows hydraulic oil to flow according to the specific range of the operator's lever motion. The result is greater fuel economy and smoother travelling.

**Tight Tail Swing**

This tight tail swing model and short slewing radius prove to be highly versatile when undertaking operations in a confined space. The left and right boom swing angle is respectively 70° and 53°, it can realize complex operation together with upper structure slewing to ensure that the digging is parallel with wall surface in narrow space through the cooperation of upper structure slewing so as to easily deal with various operating conditions.

**Dozer blade swing**

The dozer blade can swing to the left and right, which makes the machine operate more efficiently in confined space. And its left and right swing angle is 25° respectively.



Most compact one than ever.

**Auxiliary hydraulics as standard fit with three ways lines**

With one way high pressure quick coupler pipeline and two ways attachment pipelines with adjustable flow, it can provide more attachment options and the adjustable flow control allows user to operate more smoothly.

**Boom and arm Anti-drop Valves as standard**

The XE55E is fitted with a boom-lowering control device and an arm-lowering control device as standard.

► **Spacious & Comfortable**

On the XE55E, your comfort truly comes first. The luxurious cabin features a deluxe seat and a wider entrance which enables easier entrance and exit to and from the cabin. The Rollover Protective Structure (ROPS) and Operator Protective Guard (OPG, ISO10262) maximize safety. Operability is greatly enhanced with more easy-to-use features than ever before.



- 1 Ample operator's space
- 2 Foldable walking pedal
- 3 Adjustable (suspension) seat
- 4 Bulldozer control handle
- 5 Shift switch
- 6 Air conditioner
- 7 Colorful monitor
- 8 Proportional joystick
- 9 Radio (DAB)
- 10 Adjustable arm support

▶ **Simplest and easiest way to work**

Although your XCMG excavator is state-of-the-art, its maintenance doesn't get much easier. Thanks to the full-opening rear and right side bonnets, engine, control valves and various components are accessible for easy inspection and repair.



**One-sided Engine Maintenance**

XCMG has made routine maintenance extremely simple by consolidating primary engine components onto one side for easier access. Engine and other vital components can be inspected quickly and easily.



- ① Fuel filter
- ② Water separator
- ③ Engine oil filter
- ④ Coolant
- ⑤ Air filter
- ⑥ Battery
- ⑦ Radiator & Oil cooler

■ **Engine**

XE55E	
Make/model	Kubota/V2403(EU Stage V)
Fuel/cooling	Diesel/Liquid, forced circulation
No. of cylinders	4
Piston displacement	2434cm <sup>3</sup>
Nominal flywheel power	31.2 kw (41.8 hp) at 2200 rpm (ISO 14396)
Max torque	159.8Nm/1500
Bore x stroke	87mmx102.4mm
Alternator	12 V- 60A

■ **Fluid capacities**

XE55E	
Cooling system (radiator capacity)	12 l
Engine lubrication plus oil filter	9.5 l
Fuel tank	68 l
Hydraulic tank	46 l
Hydraulic system	41 l
Final drive case (each)	1 l

■ **Environment**

Noise levels comply with environmental regulations (dynamic values).

• **Noise emission**

XE55E	
Noise level LpA (EU Directive 2000/14/EC)	79dB(A)
Noise level LwA (EU Directive 2000/14/EC)	96dB(A)

■ **Undercarriage**

Tractor-type undercarriage. Heavy-duty track frame, all welded stress-relieved structure. Top-grade materials are used for toughness. Side frames are welded, securely and rigidly, to the track frame. Lifetime-lubricated track rollers, idlers with floating seals. Hydraulic track adjusters with shock-absorbing recoil springs.

• **Number of rollers and track shoes**

XE55E	
Lower rollers (per side)	3
Track shoes	Rubber
Overall track length	2490mm
Shoe width	400mm



■ **Hydraulic system**

This original design enables both independent and combined operations of all functions, joystick control type operations.

• **Pump**

XE55E	
Type	Single outlet variable displacement, load sensing torque limited pump with piston pumps
Total hydraulic capacity	158.4l/min
Auxiliary flow	90l/min
Auxiliary relief 1/2	170bar

• **Maximum system pressure**

XE55E	
Boom	320bar
Arm / bucket / travel	320/320/2656bar
Swing	265bar

■ **Swing mechanism**

High-torque, axial piston motor with planetary reduction gear bathed in oil. Swing circle is single-row, shear type ball bearing with induction-hardened internal gear. Internal gear and pinion gear immersed in lubricant. A two position swing lock secures the upper structure for transportation.

• **Swing system**

XE55E	
Boom swing, left	70°
Boom swing, right	53°
Slew rate	9.5rpm

■ **Drive**

Each track is driven by an independent, high-torque, axial piston motor through planetary reduction gears. Two control levers provide smooth travel or counter-rotation upon demand.

• **Speed & traction**

XE55E	
Travel speed (low - high)	2.8-4.6km/h
Traction force	5280kgf
Gradeability	30°

■ **Digging forces (ISO 6015)**

XE55E	
At power boost.	
Digging force, standard arm (ISO 6015)	24.3kN
Digging force, long arm (ISO 6015)	23.4kN
Digging force, bucket (ISO 6015)	44.5kN

■ **Weight**

XE55E	
Operating weight with cab and bucket(ISO6016)	5700kg
Ground pressure with rubber tracks	0.32kgf/cm <sup>2</sup>
Transport mass (no attachment)	5626kg
Weight of steel tracks	310kg
Weight of rubber tracks	240kg
Additional weight for long arm	27kg

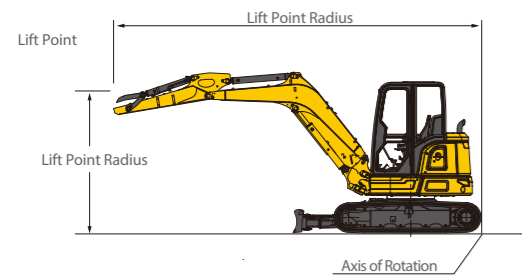
## XE55E



### Standard arm (1570mm)-standard counter weight- without bucket

Lift Point Height	Over Front					Over Side					Max Radius (Mm)		
	Lift At Max Radius(Kg)	1.0m	2.0m	3.0m	4.0m	5.0m	Lift At Max Radius(Kg)	1.0m	2.0m	3.0m		4.0m	5.0m
4m	1160*				1260		730				800		4198
3m	930				1250		580				790		4848
2m	810			1900	1220	880	510			1150	760	550	5250
1m	810			1800	1180	860	500			1070	730	540	5242
0m	830		1990*	1760	1150	850	510		1900	1030	700	530	5075
-1m	940		3660	1750	1150		580		1910	1020	700		4637
-2m	1250		3300*	1770			760		1950	1040			3804

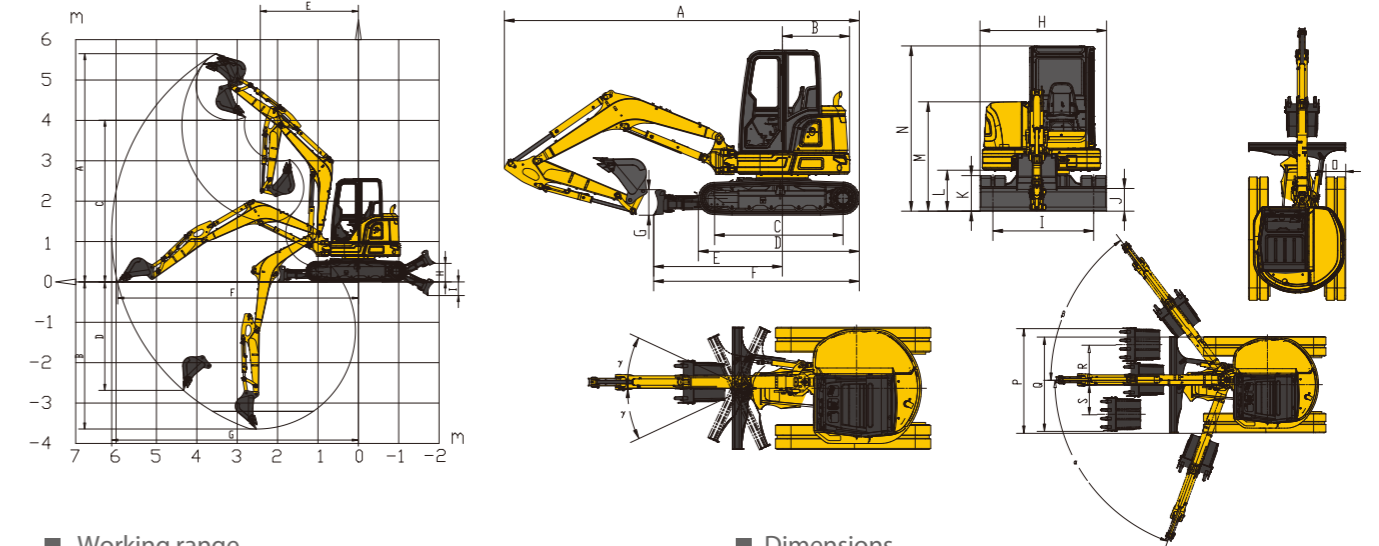
### Long arm (1900mm)-standard counter weight- without bucket

Lift Point Height	Over Front					Over Side					Max Radius (Mm)		
	Lift At Max Radius(Kg)	1.0m	2.0m	3.0m	4.0m	5.0m	Lift At Max Radius(Kg)	1.0m	2.0m	3.0m		4.0m	5.0m
4m	1013				1272		641				809		4600
3m	839				1261		526				799		5188
2m	763			1920	1226	878	475			1170	767	550	5486
1m	739			1810	1181	859	457			1073	726	532	5553
0m	760		2078*	1746	1147	843	467		1853	1017	694	517	5397
-1m	840		3600	1728	1132		514		1863	1001	681		4994
-2m	1052		3646	1741			640		1898	1013			4254



 : Over front  
 : Over side or 360°

1. The nominal forces are based on the SAE J1097 standard.
2. \* = The nominal loads are based on hydraulic capacity.
3. The nominal loads do not exceed 87% of the hydraulic capacity or 75% of the capacity of the swing.



### Working range

	XE55E	
A	Maximum digging height - std arm	5650 mm
	Maximum digging height - long arm	5770 mm
B	Maximum digging depth - std arm	3640 mm
	Maximum digging depth - long arm	3880 mm
C	Maximum dumping height - std arm	4010 mm
	Maximum dumping height - long arm	4310 mm
D	Maximum vertical wall digging depth - std arm	2690 mm
	Maximum vertical wall digging depth - long arm	2900 mm
E	Minimum swing radius - std arm	2430 mm
	Minimum swing radius - long arm	2490 mm
F	Maximum digging reach at ground level - std arm	5960 mm
	Maximum digging reach at ground level - long arm	7740 mm
G	Maximum digging radius - std arm	6110 mm
	Maximum digging radius - long arm	6320 mm
H	Maximum dozer lifting height	450 mm
I	Maximum dozer cutting depth	400 mm

### Dimensions

	XE35E	
A	Overall length	5340 mm
B	Tail slew radius	1040 mm
C	Tumbler length	1990 mm
D	Track length	2490 mm
E	Dozer blade, maximum reach at ground level	1995 mm
F	Undercarriage length	3185 mm
G	Dozer blade height	400 mm
H	Overall width	1831 mm
I	Track gauge	1560 mm
J	Minimum ground clearance	315 mm
K	Track height	550 mm
L	Ground clearance of counterweight	637 mm
M	Overall height of engine hood	1695 mm
N	Overall height	2555 mm
O	Track shoe width	400 mm
P	Working width at maximum right-hand rotation	2130 mm
Q	Working width at maximum left-hand rotation	1960 mm
R	Maximum boom offset to the right	815 mm
S	Maximum boom offset to the left	605 mm
a	Maximum boom swing angle to the right	70°
β	Maximum boom swing angle to the left	53°
γ	Maximum dozer blade swing angle	25°

### Standard and optional equipment

#### Engine

Kubota engine V2403, EU Stage V, EGR, DOC, DPF

#### Hydraulic system

Single or dual way pipeline (AUX1)  
 Dual way pipeline (AUX2)  
 Hydraulic quick coupler line  
 Proportional joysticks control

#### Cab & interior

TOPS/ OPG cab  
 Adjustable seat  
 Textile and permeable suspension seat with retractable belt  
 Air conditioning  
 Colorful LCD monitor  
 AM-FM radio with digital display  
 DAB radio with Bluetooth

#### Safety

Boom, arm and dozer cylinder safety valves  
 Travel alarm  
 Rotation beacon  
 Engine overheat warning and restart prevention system  
 Quick coupler switch with alarm  
 Emergency stop switch  
 Front and top cab protection  
 LED work lights (2 on cab-front, 1 on cab-rear, 1 on boom)

#### Undercarriage

Fixed undercarriage  
 Slewing dozer blade  
 Track guards  
 Rubber tracks 400 mm  
 Steel tracks 400 mm

#### Other

Standard arm 1570 mm  
 GP bucket 0.16 m<sup>3</sup>  
 Long arm 1900 mm  
 Narrow bucket 0.07 m<sup>3</sup>  
 Quick coupler, attachments such as hammer, clamshell

Standard: ●  
 Optional: ○

Some of these options may be standard in some markets. Some of these options may not be available for certain markets. Please check with your local XCMG dealer for more information about availability or to adapt your machine to your application needs.





XCMG approved attachments



Genuine parts



Extension of warranty



Financial solutions



Maintenance contract



Telematics



Monitoring systems

### Professional Integrated Complete Solutions

XCMG group has built a strong reputation based on the quality, reliability and durability of its construction machinery. What's more, XCMG has gradually established a service network to constantly provide its local integrated and highly efficient complete solutions for all users.

### Full range of services ready for you

In order to respond to your needs as fast as possible, XCMG experts are on their way to your job site from one of our facilities near you. Full range of services are available in order to reduce your total cost of ownership and increase your revenue.



### XCMG Global Spareparts System



Mobile cranes



Excavators



Aerial work platforms



Wheel loaders



Road machinery





 @mrplanthireuk  mr\_plant\_hire  @mrplanthireuk  @mrplanthireuk  
Head office: 120 Hertford Road, Enfield EN3 5AX | e: info@mrplanthire.co.uk

**SCAN ME** TO DOWNLOAD THE MPH APP  
EQUIPMENT INVENTORY | SPECIFICATIONS  
TUTORIALS | TRAINING | SUPPORT

**020 8351 3434**