



 **MANITOU**
HANDLING YOUR WORLD

SCAN ME TO DOWNLOAD THE MPH APP
EQUIPMENT INVENTORY | SPECIFICATIONS
TUTORIALS | TRAINING | SUPPORT

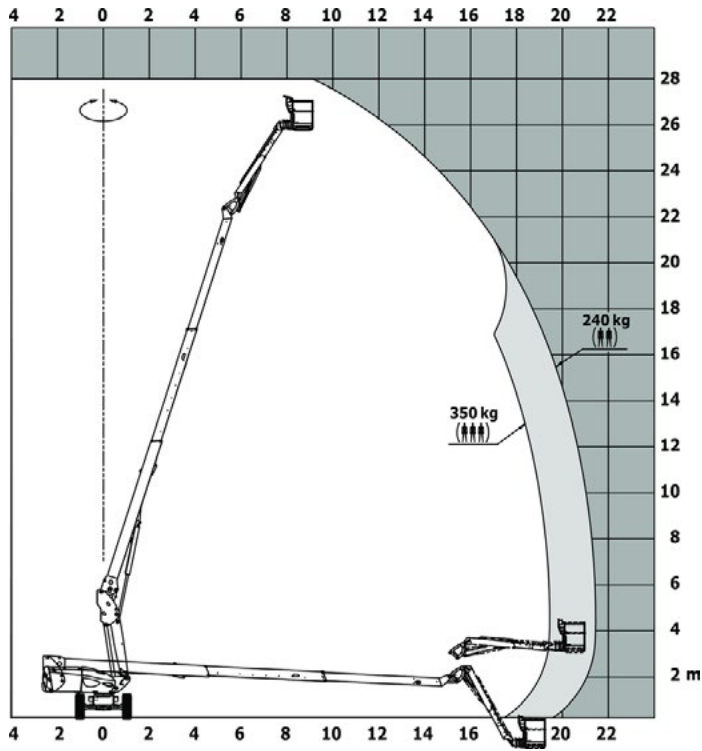
020 8351 3434

| Capacities | | Metric |
|--|---------|--|
| Working height | h21 | 27.73 m |
| Floor height (access) | h20 | 0.40 m |
| Platform height | h7 | 25.73 m |
| Max. outreach | | 21.45 m |
| Pendular arm rotation (top / bottom) | | +56.80 ° / -62 ° |
| Platform capacity / capacity (maximum) | Q | 350.24 kg / 350 kg |
| Turret rotation | | 360 ° |
| Platform rotation (right / left) | | 90 ° / 90 ° |
| Number of people (indoor / outdoor) | | 3 / 2 |
| Weight and dimensions | | |
| Platform weight* | | 16500 kg |
| Platform dimensions (length x width) | lp / ep | 2.30 m x 0.90 m |
| Overall length | l1 | 11.36 m |
| Overall width | b1 | 2.48 m |
| Overall height | h17 | 2.73 m |
| Overall length (stowed) | l9 | 8.09 m |
| Overall height (stowed) | h18 | 2.71 m |
| Telescopic jib length retracted / extended | | 2800 mm / 4300 mm |
| Counterweight offset (turret at 90°) | a7 | 1.43 m |
| External turning radius | Wa3 | 4.35 m |
| Ground clearance at centre of wheelbase | m2 | 0.41 m |
| Wheelbase | y | 2.80 m |
| Performances | | |
| Drive speed - stowed | | 4.50 km/h |
| Drive speed - raised | | 0.80 km/h |
| Gradeability | | 40 % |
| Permissible leveling | | 4 ° |
| Wheels | | |
| Tyres type | | Solid Tyres Cured-On |
| Drive wheels (front / rear) | | 2 / 2 |
| Steering wheels (front / rear) | | 2 / 2 |
| Braking wheels (front / rear) | | 2 / 2 |
| Engine/Battery | | |
| Engine brand / model | | Yanmar - 4TNV88C |
| I.C. Engine power rating / Power (kW) | | 46 Hp / 34.30 kW |
| Miscellaneous | | |
| Ground Pressure | | 21.30 dan/cm2 |
| Hydraulic Pressure | | 400 bar |
| Hydraulic tank capacity | | 94 l |
| Fuel tank | | 76 l |
| Noise to environment (LwA) | | < 102 dB |
| Vibration on hands/arms | | < 0.50 m/s ² |
| Standards compliance | | |
| This machine is in compliance with: | | European directives: 2006/42/EC- Machinery (revised EN280:2013) - 2004/108/EC (EMC) - 2006/95/EC (Low voltage) |

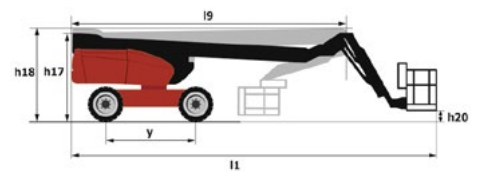
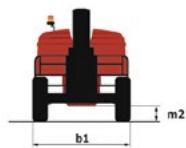
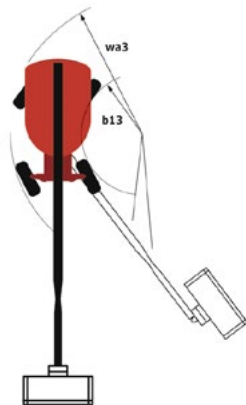
*Varies according to options and standards of the country to which the machine is delivered
** According to "REDUCE cycle"

280 TJ - Load chart

Load Chart for MEWP Metric



280 TJ - Dimensional drawing



Equipment

| Standard | Optional |
|---|---|
| 230V Predisposition | Additional storage boxes |
| 4 simultaneous movements | Battery blanket |
| 4 wheel drive | Battery cut-off |
| 4 wheel steer with crab mode | Biodegradable hydraulic oil - Grade 32 |
| Audible alarm and illuminated indicator lamp (leveling, overload, lowering) | Cold weather protection oil |
| Backup electrical pump | Engine Block Heater |
| CAN bus technology | Highly capacity battery |
| Connected machine | Hydraulic oil heater |
| Continuous turret rotation | Large basket 2.30m with lateral door |
| Dead man pedal | Lockable fuel cap |
| Differential locking on rear axle | Narrow basket 1.80m |
| Emergency stop button in platform and on frame | Non marking solid tyres |
| Engine on swivel chair | Onboard generator (3,5 or 5 kW) |
| Engine with DPF | Panel cradle |
| Front axle with limited slip | Personalized paintwork |
| Fuel gauge with low level indicator | Pipe cradle |
| Hom in the platform | SPS : Secondary protection system |
| Hour meter | Safety kit - Harness + helmet |
| LED rotating beacon | Safety valve |
| Large basket with three entries | Screen protection on the lower box control |
| Oscillating front axle | Socket 230 V + differential circuit breaker |
| Remote control for transport | Spark arrester |
| Stop & Go system | Working light |
| Telescopic jib | |
| Turret orientation information | |
| X Y function | |

 @mrplanthireuk  mr_plant_hire  @mrplanthireuk  @mrplanthireuk
Head office: 120 Hertford Road, Enfield EN3 5AX | e: info@mrplanthire.co.uk