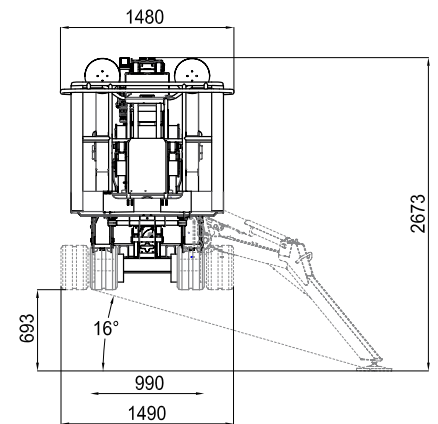
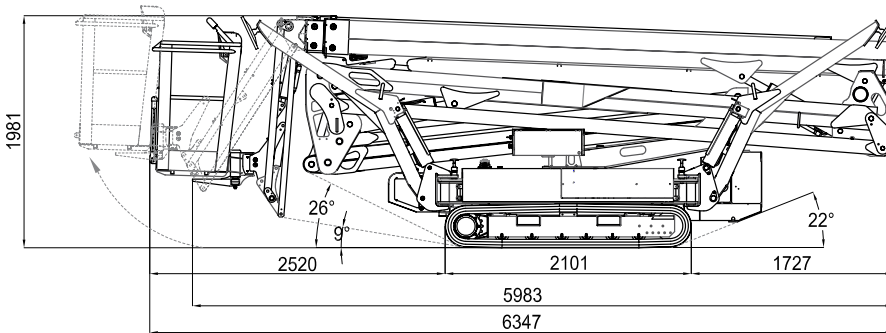
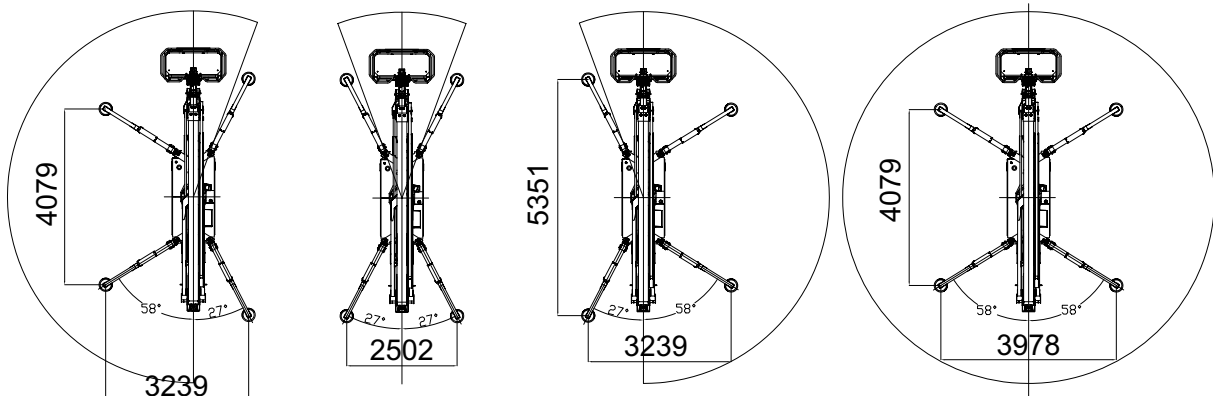


LIGHTLIFT 26.14 *PERFORMANCE* III S

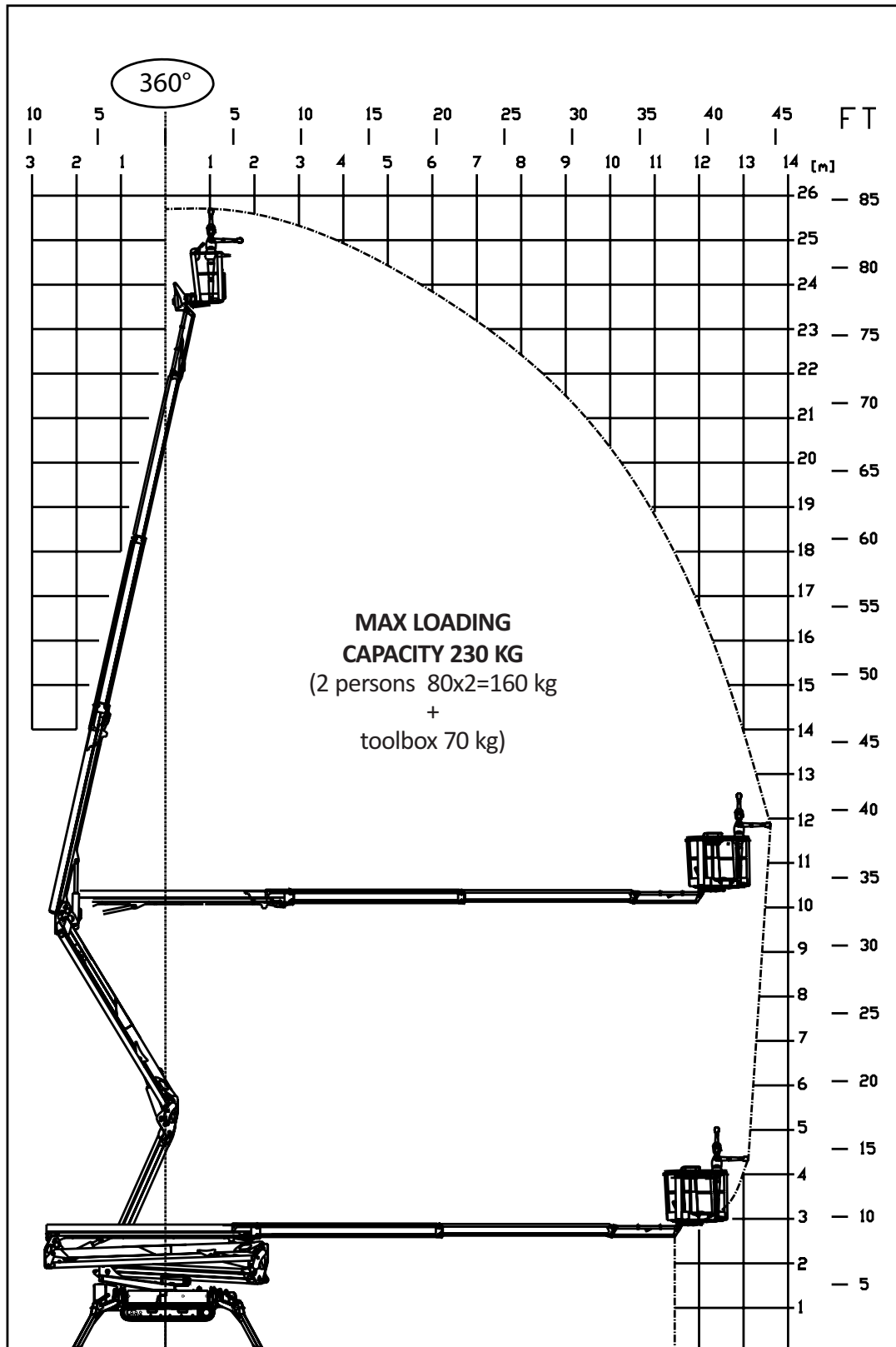


VARIABLE AREA OF STABILIZATION



SCAN ME TO DOWNLOAD THE MPH APP
EQUIPMENT INVENTORY | SPECIFICATIONS
TUTORIALS | TRAINING | SUPPORT

020 8351 3434



DIESEL ENGINE

BrandKubota
Type.....D902
Pistons no. and displacement.....898 cm³
Max. gross power.21,6 HP - 16,1 Kw @ 3200 rpm
Setting3200 rpm
Electrical start.....12 volt

ELECTRIC MOTOR

Standard230V / 50 Hz - 2,2 Kw 1500 rpm
Optional110V / 50 Hz - 2,2 Kw 1500 rpm

HYDRAULIC PUMPS

Pump diesel enginedouble 2x6,67 cm³
Pump electric motordouble 2x3,34 cm³
Translation system/outriggers pressure185 bar
Aerial system pressure200 bar

TRACKED UNDERCARRIAGE

Track tensionergrease-filled
Rollers no. per side.....6 + slide
Widening system.....990 / 1490 mm

OPERATING WEIGHT 4365 kg
MAX UPPER SLANT.....16° / 28,7%
MAX WIND SPEED.....12,5 m/s

ELECTRIC MOTOR

Electric motor	3,5kW/ 83V
Electric system voltage.....	83V-12V
Lithium battery pack	83V / 100Ah
Estimated battery range on full charge	4-5 h
Onboard battery charger	220V ± 30V 50÷60Hz
Optional battery charger	110V ± 30V 50÷60Hz
Estimated recharge time on flat batteries.....	4-5 h
Estimated recharge time to 80% on flat batteries	2 h
No. of possible recharges	2000 cycles

HYDRAULIC PUMPS

Translation system/outriggers pressure	185 bar
Aerial system pressure	200 bar

TRACKED UNDERCARRIAGE

Track tensioner	grease-filled
Rollers no. per side.....	6 + slide
Widening system.....	990 / 1490 mm

MAX UPPER SLANT16° / 28,7%

MAX WIND SPEED12,5 m/s

 @mrplanthireuk  mr_plant_hire  @mrplanthireuk  @mrplanthireuk

Head office: 120 Hertford Road, Enfield EN3 5AX | e: info@mrplanthire.co.uk