

020 8351 3434

# Hinowa®

HIGH PERFORMANCE  
AND COMPACT  
TRACKED AERIAL  
PLATFORM



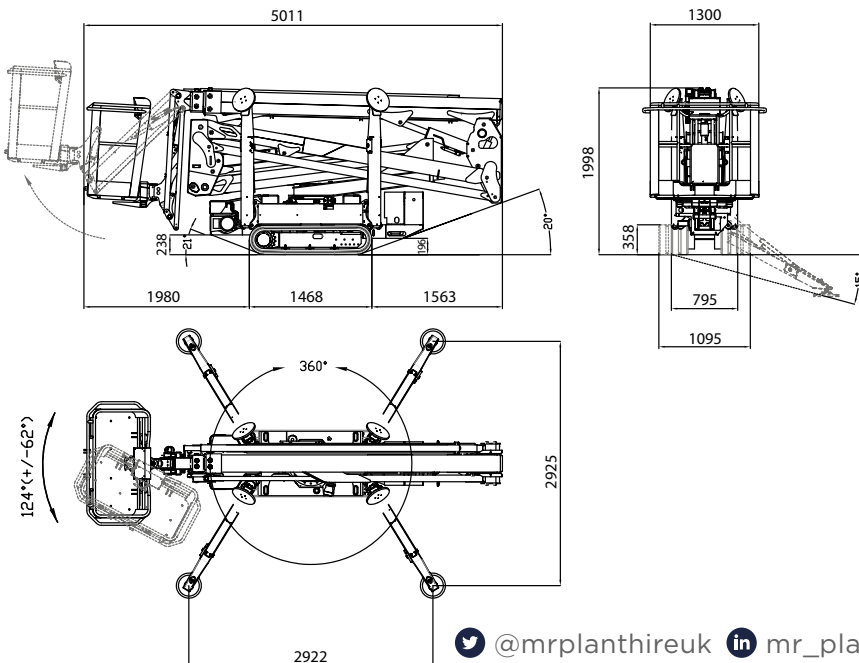
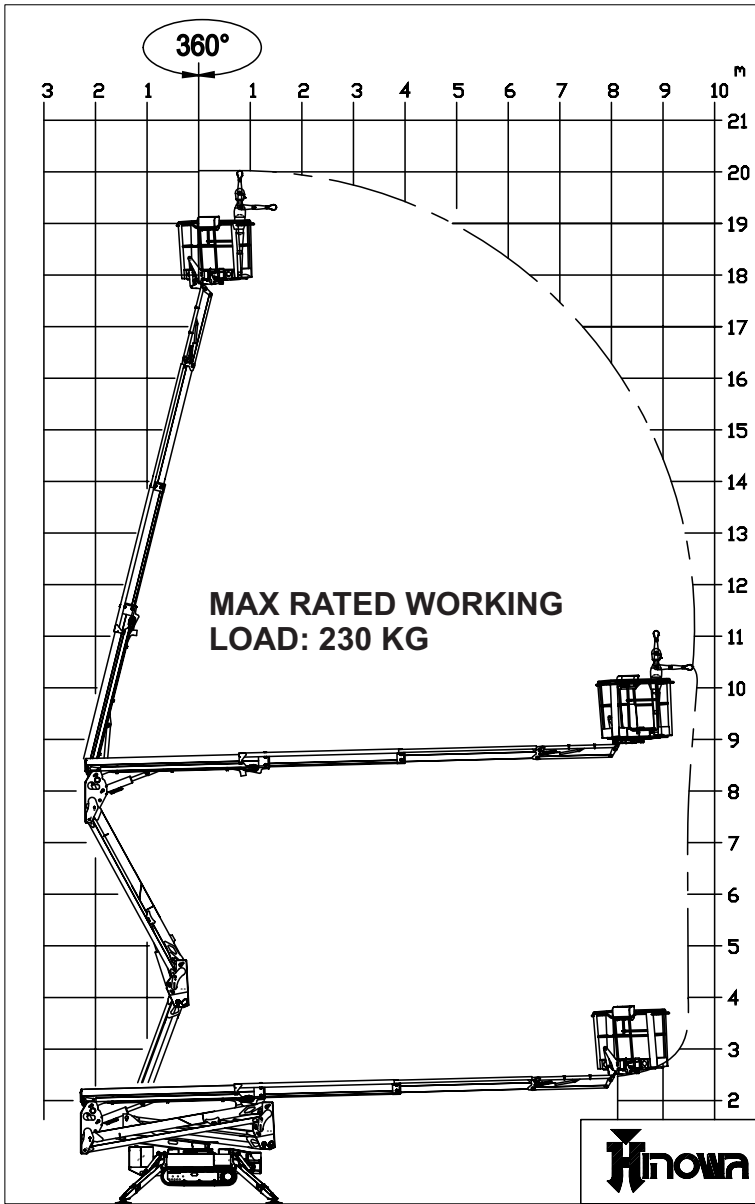
**230 kg  
capacity!**

[www.hinowa.com](http://www.hinowa.com)


## **DISTINCTIVE FEATURES**


- 230 kg capacity for the whole working area
- Wide working diagram: 20 m working height and 9.7 m continuous outreach with flush with the wall trajectory
- Wide range of motorizations available
- Speed and precision of the movements








- MAX WORKING HEIGHT



  
20,15 m
 



  
**CAPACITY**  
**230 kg**
- MAX HORIZONTAL WORKING OUTREACH



  
9,70 m
- TRANSPORT LENGTH



  
5,01 m
- TRANSPORT LENGTH WITHOUT BASKET AND ROTATED SUPPORT



  
4,50 m
- TRANSPORT HEIGHT



  
1,99 m
- STANDARD CAGE DIMENSIONS



  
1335x690xh.1100 mm
- WEIGHT WITHOUT FUELS AND OIL


  
2800 kg (with petrol engine)
- TOTAL OPERATING WEIGHT


  
2880 kg (with petrol engine)
- THERMIC ENGINE AVAILABLE


  - Honda iGX440-12,7HP 3600 rpm
  - Perkins 402.05-14HP 3600 rpm
- ELECTRIC MOTOR


  
2,2kw-230V-50Hz (110 optional) 1500rpm
- CLOSED MACHINE WIDTH


  
795 / 1095 mm



ELECTRIC MOTOR WITH LITHIUM BATTERIES  
OPTIONAL 90Ah / 72V

**SCAN ME TO DOWNLOAD THE MPH APP**

EQUIPMENT INVENTORY  
SPECIFICATIONS  
TUTORIALS  
TRAINING  
SUPPORT

020 8351 3434