

Rough-terrain Scissor Lifts

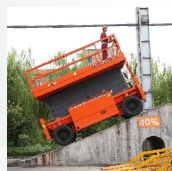
14m-22m



One-key Extended Platform
(Apply to JCPT2223)



4WS
(Apply to JCPT2223)



Strong Power



Self-leveling Hydraulic Outriggers

Model: JCPT2223DC/RTB - JCPT1823RT - JCPT1523RT - JCPT1418DC/RT - JCPT1218DC/RT

The rough-terrain scissor lift series is divided into two categories: engine drive and electric drive., which maximum working height 12 ~ 22 meters, maximum load of 750 kg, have great height, large load, strong power, large platform size and other advantages, can be competent for worse conditions, in order to satisfy the demands of indoor and outdoor various assignments.

In addition to all the advantages of engine drive types, in view of the pure electric design, the equipment also takes into account the environmental advantages of noiseless, zero emission and so on. It is suitable for the operation environment with high environmental requirements, such as SGCC, nuclear power plant, SINOPEC, CNPC, residential area, airport, tunnel, etc.

Standard Equipment

Proportional Controls / Self-lock Gate On Platform / 4WD / 4WS / Self-leveling Hydraulic Outriggers / Automatic Brake System / Slide-out Engine Tray / Emergency Stop Button / Cylinder Holding Valve / Onboard Diagnostic System / Tilt Sensor With Alarm / Anti-restart Engine Protection / All Motion Alarm / Horn / Hour Meter / Safety Bracket / Folding Guardrails / Automatic Unidirectional Extended Platform / Flashing Beacon / Hydraulic Oil Cooler

Options

Overload Sensor With Sensor / Hydraulic Generator / Hydraulic Welder / Hydraulic Air Compressor / Hydraulic Water Pump / AC power To Platform / Platform Work Lights / Non Marking Tyre

Model	JCPT2223	
Drive Type	■ =Electric ■ =Engine	
	DC	RTB

Size		
MAX.Working Height	22.00m	22.00m
MAX.Platform Floor Height	20.00m	20.00m
Overall Length	4.95m	4.95m
Overall Width	2.46m	2.46m
Overall Height(Rails Up)	3.86m	3.86m
Overall Height(Rails Down)	3.00m	3.00m
Platform Size(Length/Width)	4.59×2.25m	4.59×2.25m
Platform Extension Size	2.70m	2.70m
Ground Clearance	0.40m	0.40m
Wheelbase	3.30m	3.30m
Turning Radius(Inside/Outside)	1.25m/3.40m	1.25m/3.40m
Tyre Size	36×14-20	36×14-20

Performance		
Capacity	750kg	750kg
Capacity On Extension	750kg	750kg
Max.Occupants	4	4
Gradeability	30%	30%
Travel Speed(Stowed)	5.0km/h	4.5km/h
Travel Speed(Raised)	0.4km/h	0.4km/h
MAX. Working Slope	2°/3°	2°/3°
Up/Down Speed	90/100sec	90/100sec

Weight		
Overall Weight	13400kg	13000kg

Power		
Engine	DEUTZ D2.9 L4	/
Diesel Tank	/	100L
Hydraulic Tank	150L	150L
Batteries	48V/630Ah	/
Integrated Charger	48V/60A	/
Drive Motor	4×AC 32V/3.3kW	/
Lifting Motor	2×DC 48V/8.0kW	/

Electric Drive Scissor Lifts

22m



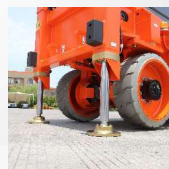
4WS



Great Passability



Ultra-long Platform



Self-leveling Hydraulic Outriggers

Model: JCPT2212DC

The maximum working height is 22m, the heavy load at full height is 600kg, the whole machine adopts pure electric drive, has 4WS&4WD ability, turning radius is 0.5m/2.5m, can be crab-steering. In addition, the JCPT2212DC is equipped with a 4.3m×1.19m working platform and a 1.8m long extended platform, with a wider operating range.

Different from the 22m JCPT2223DC, JCPT2212DC width is only 1.25m, with excellent passability, can easily go through the narrow doorframes, channels, etc. In view of pure electric drive, JCPT2212DC has no pollution, zero emission, energy saving and environmental protection, suitable for indoor and outdoor working environment with high environmental requirements.

Standard Equipment

Proportional controls / Automatic pothole protection / Self-lock gate on platform / Automatic leveling hydraulic outriggers / Non marking tyre / 2WD / Automatic brakes system / Emergency stop button / Emergency lowering system / Cylinder holding valve / Onboard diagnostic system / Tilt sensor with alarm / All Motion Alarm / Horn / Hour meter / Safety brackets / Folding guardrails / Extended platform / Charger protection / Flashing beacon

Options

Overload sensor with alarm / AC power on the platform / Platform work lights / Airline to the platform

Model	JCPT2212
Drive Type ■ =Electric ■ =Engine	DC

Size	
MAX.Working Height	22.00m
MAX.Platform Floor Height	20.00m
Overall Length	4.72m
Overall Width	1.25m
Overall Height(Rails Up)	3.82m
Overall Height(Rails Down)	2.99m
Platform Size(Length/Width)	4.30×1.19m
Platform Extension Size	1.80m
Ground Clearance	0.20m
Wheelbase	3.18m
Turning Radius(Inside/Outside)	0.5m/2.5m
Tyre Size	28×10-22

Performance	
Capacity	600kg
Capacity On Extension	600kg
Max.Occupants	2
Gradeability	25%
Travel Speed(Stowed)	3.0km/h
Travel Speed(Raised)	0.5km/h
MAX. Working Slope	1°(0°)
Up/Down Speed	80/100sec

Weight	
Overall Weight	12350kg

Power	
Hydraulic Tank	130L
Batteries	48V/630Ah
Integrated Charger	48V/60A
Drive Motor	4×AC 32V/3.3kW
Lifting Motor	2×DC 48V/8.0kW