

**Mr Plant Hire plc**

# products that boost efficiency

introducing

**armorgard**  
ticking every box.



Visit us at [mrplanthire.co.uk](http://mrplanthire.co.uk) to find more details of armorgard products

The simple and dependable solution for securing your tools and equipment

# armorgard oxbox™

The **OxBox** is a medium duty range of tool vaults designed for use where budget is a consideration. Despite the competitive price tag, there has been no compromising on quality; **OxBox** shares many of the premium features found on its higher priced companion ranges, including locks, hinges, gas struts and paint finish, while its unique 'folded' construction delivers outstanding strength. Manufactured from 1.5 and 2.0mm steel, the **OxBox** is available in 6 popular sizes and offers dependable, cost-effective security for your tools and equipment.



**KEYED ALIKE 5-LEVER**  
DEADLOCKS BOTH SIDES  
WITH HEAVY DUTY  
CHUBB-STYLE KEYS,  
WELDED SECURITY ID  
NUMBERS



**STRONG GAS STRUTS**  
FITTED AS STANDARD  
- CONFORM TO INDUSTRY  
STANDARDS

**SUITABLE FOR SITES  
AND VANS**

**STEEL PLATE  
CONSTRUCTION** WITH  
DURABLE POWDER  
COATED FINISH

FORK SKIDS  
WITH FIXING SLOTS FOR  
EASILY ADDING CASTORS  
(EXCEPT OX1, OX2 AND OX6)



OXBOX

Product Code	Description	Weight	External Dimensions W x D x H (mm)	Internal Dimensions W x D x H (mm)
OX05	Van box	24kg	810 x 478 x 380	760 x 425 x 375
OX1	Van box	27kg	915 x 490 x 450	830 x 425 x 440
OX2	Truck box	39kg	1215 x 490 x 450	1130 x 425 x 440
OX3	Site box 4x2x2	58kg	1200 x 665 x 630	1115 x 595 x 545
OX4	Site chest 4x4x2	104kg	1210 x 640 x 1175	1125 x 565 x 1090
OX6	Truck box	58.5kg	1800 x 555 x 445	1710 x 480 x 440

Note: weights and dimensions are approximate. External dimensions include handles.

Get your Armorgard products today at [www.mrplanthire.co.uk](http://www.mrplanthire.co.uk)



The unique portable site box designed for contractors on the move

Theft of unattended tools on construction sites has risen at an alarming rate. BarroBox allows you to keep your tools at your side 24/7, confident they are safe from thieves when your back is turned. Robust, versatile and easy to operate, this ingeniously designed portable box solves the problem of on-site tool theft. To secure the vault, simply raise the wheels and lock the lid. When it's time to move, just lower the wheels using the internal handle and it's mobile in an instant.

# armorgard barrobox™



**UNIQUE WHEELWINDER™**  
CONVERTS BARROBOX  
FROM MOBILE TO  
STATIC IN SECONDS!



**KEYED ALIKE 5-LEVER**  
DEADLOCKS BOTH SIDES  
WITH HEAVY DUTY  
CHUBB-STYLE KEYS,  
WELDED SECURITY ID  
NUMBERS AND 6MM  
REINFORCEMENT



**STRONG GAS STRUTS**  
AND SAFETY CATCH  
FITTED AS STANDARD  
- CONFORM TO  
INDUSTRY STANDARDS

BB2

**ROBUST CONSTRUCTION**  
FROM HEAVY DUTY STEEL  
PLATE THROUGHOUT

**ROBUST FOLDING**  
HANDLES ENSURE THE  
BARROBOX IS EASY TO  
MANOEUVRE

Product Code	Description	Weight	External Dimensions W x D x H (mm)	Internal Dimensions W x D x H (mm)
BB2	BarroBox	80kg	740 x 1095 x 720	600 x 795 x 605

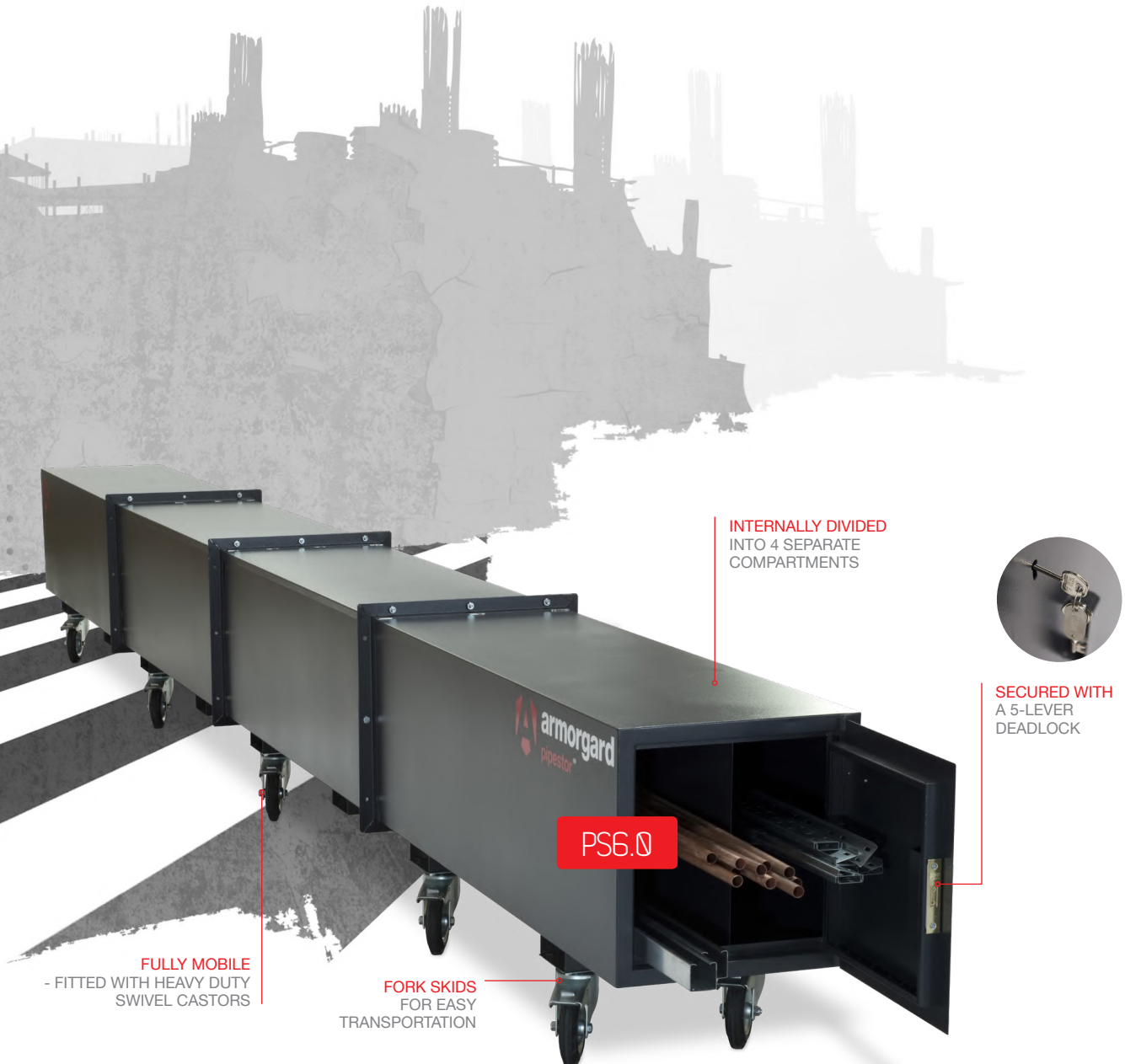
Note: weights and dimensions are approximate. External dimensions include handles.



The mobile  
secure storage  
trunk that keeps  
your copper  
piping safe and  
organised

Foil the copper thieves by keeping your valuable piping locked up on site in this innovatively designed 'copper coffin'. The **PipeStor** portable secure storage trunk, gives you the peace of mind that your copper piping is safe 24/7. The interior is divided into four sections to accommodate different sizes and styles of pipes – including plastic and metal conduit, trunking and cable tray – and is secured on one end with a heavy duty door and lock. Versatile design, it can be easily extended to take longer lengths of pipe by adding optional extra sections as required.

# armorgard pipestor™



Product Code	Description	Weight	External Dimensions W x D x H (mm)	Internal Dimensions W x D x H (mm)
PS3.0	PipeStor	133kg	575 x 3205 x 785	495 x 3160 x 495
PS6.0	PipeStor	256kg	575 x 6410 x 785	495 x 6350 x 495

Note: weights and dimensions are approximate. External dimensions include handles.

Get your Armorgard products today at [www.mrplanthire.co.uk](http://www.mrplanthire.co.uk)

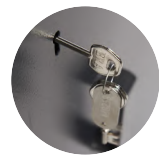
The secure storage cabinet designed to keep the 'copper thieves' at bay!

The high value of copper fittings and cabling means that theft is on the rise, with criminals targeting construction sites on a daily basis. Don't make it easy for them! **FittingStor** is designed to secure all your costly M&E components and tools in one safe, easily portable location. Featuring adjustable shelves, removable fittings bins and heavy duty castors for ease of movement, this innovative product is in high demand among site contractors and available in 4 different configurations.

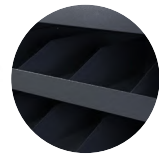
# armorgard fittingstor™

FITTINGSTOR

FC4



2x KEYED ALIKE 5-LEVER DEADLOCKS WITH HEAVY DUTY CHUBB-STYLE KEYS, WELDED SECURITY ID NUMBERS AND 6MM REINFORCEMENT



3 FULLY WELDED METAL SHELVES AND COMPARTMENTS (FC4)

POWDER COATED FOR MAXIMUM DURABILITY

ROBUST STEEL PLATE CONSTRUCTION GIVING MAXIMUM PROTECTION

STORAGE COMPARTMENT IN THE BASE FOR TOOLS & EQUIPMENT



HEAVY DUTY INDUSTRIAL CASTORS FITTED AS STANDARD



Product Code	Description	Weight	External Dimensions W x D x H (mm)	Internal Dimensions W x D x H (mm)
FC2	FittingStor	88.5kg	800 x 555 x 1450	790 x 540 x 1170
FC3	FittingStor	139kg	1200 x 550 x 1750	1185 x 510 x 1465
FC4	FittingStor	132.5kg	1010 x 550 x 1575	995 x 505 x 1295
FC5	FittingStor	160kg	960 x 985 x 1375	900 x 900 x 1290
FC6	FittingStor	123kg	1077 x 775 x 1880	880 x 709 x 1592

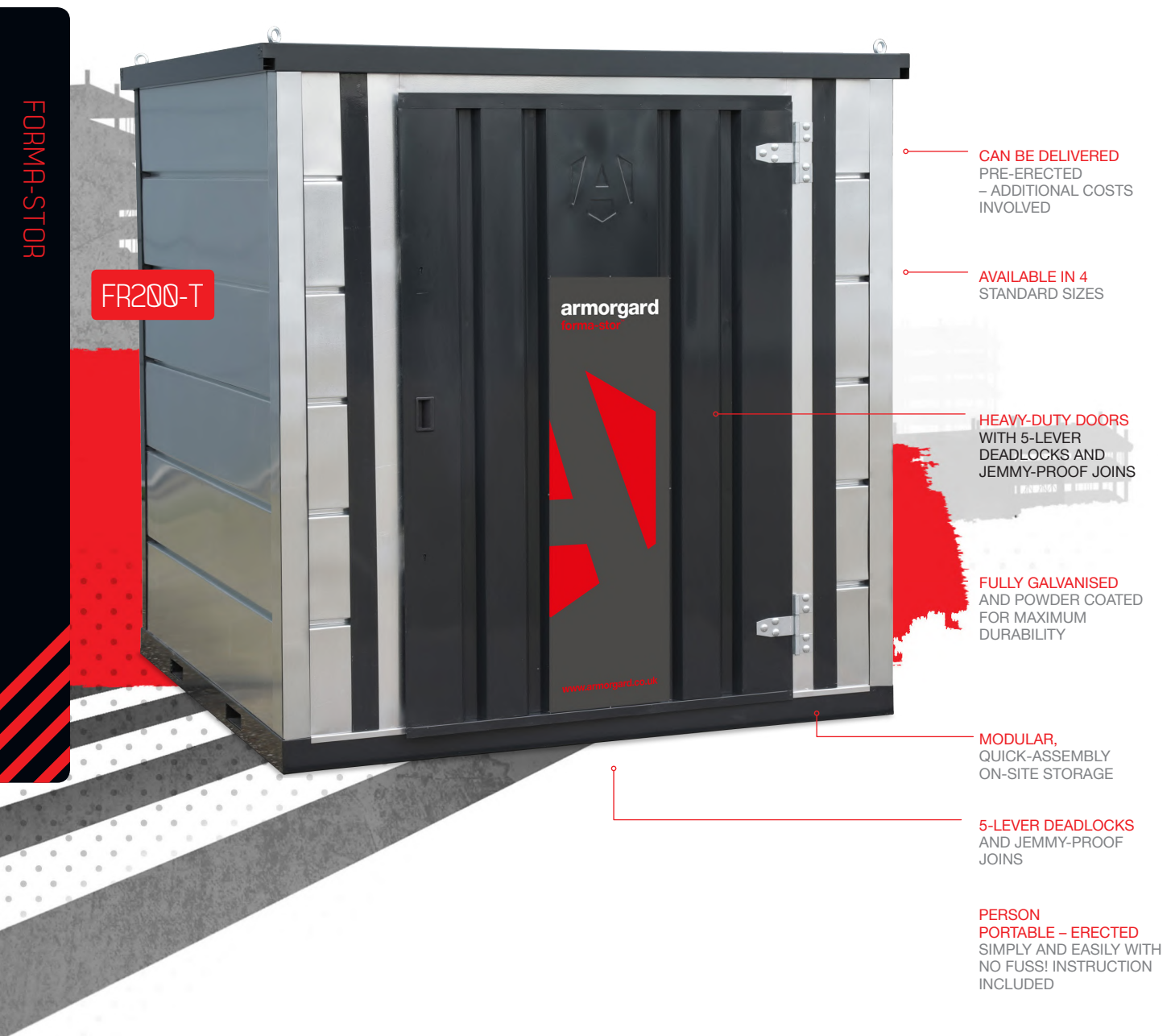
Note: weights and dimensions are approximate. External dimensions include handles.

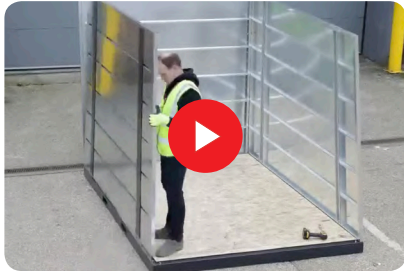


Introducing our new  
quick-assembly,  
modular solution for  
on-site secure storage

# armorgard forma-stor™

With theft of tools and equipment on the increase, we've come up with Forma-Stor - a secure store that can be constructed anywhere in as little as 10 minutes. With 5-lever deadlocks and jemmy-proof joins, we believe that **Forma-Stor** is the most robust flat-pack storage around. An ideal solution for contractors who need quick and convenient storage, these walk-in units are constructed using galvanised panels that fasten neatly together with very few tools.





WATCH THE FORMA-STOR BEING  
BUILT IN JUST 6 MINUTES!

FR300-T



FR400-T



FR100-T



**FORK SKIDS FOR EASY  
TRANSPORTATION**



**LIFTING EYES  
FOR CRANE LOADING**



**STRONG FITTED  
OSB FLOOR**



**FLAT-PACKED  
FOR EASY TRANSPORTATION**

FORMA-STOR

Product Code	Description	Weight	External Dimensions (including protrusions) W x D x H (mm)	Internal Dimensions W x D x H (mm)
FR100-T	Forma-Stor	275kg	2075 x 1120 x 2160	1920 x 970 x 1950
FR200-T	Forma-Stor	407kg	2075 x 2075 x 2160	1920 x 1920 x 1950
FR300-T	Forma-Stor	498kg	2075 x 2990 x 2160	1920 x 2840 x 1950
FR400-T	Forma-Stor	620kg	2075 x 3995 x 2160	1920 x 3840 x 1950

Get your Armorgard products today at [www.mrplanthire.co.uk](http://www.mrplanthire.co.uk)

The versatile and  
easy-to-use  
mobile work  
platform from  
Armorgard

The **TuffBench** heavy-duty folding work platform is a versatile workbench designed for contractors on the move, and is perfect for use on construction sites. Its quick and easy assembly system – with no detachable parts – makes it easy to transport and store. When it's time to move on, simply collapse the platform, fold the legs and you're ready to go! Durable and built to last, the surface is manufactured from sustainable pressed timber, and is ideal for use with attachments such as power tools, vices and pipe threaders.

# armorgard tuffbench™

TUFFBENCH

NO DETACHABLE PARTS  
- STAYS TOGETHER  
AS ONE UNIT

DURABLE TIMBER WORK  
SURFACE  
AND POWDER-COATED  
FRAME FOR  
LONG-LASTING  
DEPENDABILITY

FOLDING LEGS  
SECURED WITH A  
CHAIN WHEN SHUT

METAL EDGE FLUSH  
WITH WOODEN WORK  
SURFACE

COLLAPSIBLE  
FOR EASY STORAGE  
AND TRANSPORTATION

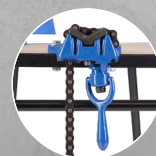
IDEAL FOR FITTING A  
CHAIN VICE AND  
ENGINEERS VICE TO

BH1080





OPTIONAL 6"  
ENGINEERS VICE



OPTIONAL 4"  
CHAIN VICE



OPTIONAL HANDLE  
AND WHEELS

BH1080-VWK

TUFFBENCH

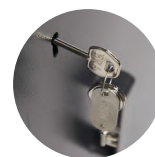
Product Code	Description	Weight	External Dimensions W x D x H (mm)	Folded Down Dimensions W x D x H (mm)
BH1080	TuffBench	28kg	1080 x 750 x 820	1080 x 750 x 130
BH1080-HW	TuffBench+ c/w handle and wheels	31kg	1080 x 750 x 820	1080 x 750 x 130
EV6	6" Engineers Vice	22kg	N/A	N/A
CV4	4" Chain Vice	5kg	N/A	N/A
BH1080-VWK	TuffBench+ c/w wheels, handle, chain vice and engineers vice	58kg	N/A	N/A

Get your Armorgard products today at [www.mrplanthire.co.uk](http://www.mrplanthire.co.uk)

# armorgard mobile tuffbench™

The universal  
mobile  
workbench  
that's also a  
heavy-duty  
cabinet!

Use the **Armorgard Mobile TuffBench** for a day and you'll wonder how you ever got by without it. A combination of heavy-duty storage cabinet and multi-purpose work surface, this innovative workbench makes any job that bit easier, while ensuring that your tools and equipment remain safe from thieves and damage. Its ultra-tough surface is ideal for fixing chain vice, engineers vice and other equipment, making it indispensable for M&E contractors when pipe threading and bending.



FITTED WITH 5-LEVER  
DEADLOCK - WITH  
INTERNAL ANTI-JEMMY  
SYSTEM FOR MAXIMUM  
SECURITY

SERIAL NUMBERED  
FOR EASY KEY  
REPLACEMENT

SECURE LOCKABLE  
TOOL CABINET  
SECTION BENEATH  
WORKBENCH

ANTI-CORROSIVE  
POWDER COATING FOR  
MAXIMUM DURABILITY

HANDLES FITTED  
TO EACH END OF  
UNIT FOR EASE OF  
HANDLING

FITTED WITH EXTRA  
HEAVY-DUTY WHEELS  
(2 WITH BRAKES)  
- QUICK AND EASY TO MAN



CAN BE FITTED  
WITH AN OPTIONAL  
WOODEN WORK TOP

MOBILE TUFFBENCH

BH1270M



BH1270M



OPTIONAL EXTRA  
WOODEN TOP



CAN BE COMPLETED  
WITH AN OPTIONAL  
6" ENGINEERS VICE



CAN BE COMPLETED  
WITH AN OPTIONAL  
4" CHAIN VICE

Product Code	Description	Weight	External Dimensions W x D x H (mm)	Internal Dimensions W x D x H (mm)
BH1270M	Mobile TuffBench	78kg	1120 x 705 x 920	990 x 630 x 640
BH1270M-W	Mobile TuffBench with wooden top	97.5kg	1200 x 700 x 940	990 x 630 x 640
EV6	6" Engineers Vice	22kg	N/A	N/A
CV4	4" Chain Vice	5kg	N/A	N/A

Note: weights and dimensions are approximate. External dimensions include handles.

MOBILE TUFFBENCH

Get your Armorgard products today at [www.mrplanthire.co.uk](http://www.mrplanthire.co.uk)



**armorgard**

# cuttingstation<sup>TM</sup>

A go-anywhere,  
multi-purpose cutting  
station with unrivalled  
safety features to  
minimise vibration,  
sparks, noise and dust

Our ever-popular Armorgard **CuttingStation** is a neat, mobile workstation that eliminates the need for a separate cutting room and is essential for safely cutting lengths, such as conduit, timber, cable tray and pipe. The new SS7 model is now even better! Improvements include new lighting and chamfered corners to further reduce noise. You'll also find a new expandable working area to accommodate mitre saws and cutaway sides for handling longer lengths.



## MORE SPACE

THE UNIQUE EXTENDABLE BACK CREATES A MUCH BIGGER, SAFER WORKSPACE. NOW SUITABLE FOR MITRE SAWS AS WELL AS METAL CUT-OFF SAWS

## BETTER SUPPORT

NEW SUPPORT ARMS GIVE MORE OPTIONS WITH 4 CONFIGURATIONS, MAKING IT EVEN EASIER TO USE

## EASIER ACCESS

WITH CUT-OUT FRONT AND ADAPTABLE PVC CURTAINS FOR EASIER ACCESS

European Patent  
Application Number:  
EP17183824.6

European Community  
Design Registration  
Number: 004511525

SS7

CUTTINGSTATION

EASY ACCESS  
CUT OUT FRONT

RETRACTABLE  
BACK TO ALLOW  
ACCESS THROUGH  
DOORWAYS

EXTENDABLE BACK  
PANEL FOR EXTRA  
WORKSPACE TO  
CATER FOR MITRE  
SAWS

PVC CURTAINS TO  
CONTAIN SPARKS

RUBBER MAT  
TO REDUCE  
VIBRATION

SWarf  
COLLECTOR  
WITH DUST  
EXTRACTOR  
CONNECTION

RECESSED 110V  
INLET POWER  
SUPPLY, AND 2 X  
110V INTERNAL  
SOCKETS

EXTENDABLE  
SUPPORT ARMS  
WITH 4  
CONFIGURATIONS

RUBBERISED WHEELS  
FOR REDUCED  
VIBRATION

HEAVY-DUTY  
ALL-SWIVEL  
WHEELS FOR  
EASY MOVING

SECURE CABINET  
TO KEEP YOUR  
TOOLS SAFE

CUTTINGSTATION

Product Code	Description	Weight	External Dimensions W x D x H (mm)	Internal Dimensions W x D x H (mm)
SS7	CuttingStation	175kg	Standard 1390 x 750 x 1900 Extended 1390 x 1070 x 1900	Top (with extended back) 1140 x 1020 x 960 Bottom 1135 x 710 x 550
SS7X	CuttingStation	198.3kg	1385 x 785 x 1905	1130 x 710 x 695 (Base)
SS7C	CuttingStation clamp	4kg	30 x 1000 x 550	N/A

Get your Armorgard products today at [www.mrplanthire.co.uk](http://www.mrplanthire.co.uk)



The all-in-one  
workbench and  
extraction  
management unit

Protect your workforce from dust and fumes with **XtractaBench**; our all-in-one workbench and extraction management unit. This sturdy mobile unit is a must-have for anyone cutting, grinding, drilling, routing, or working with materials such as plasterboard, wood, or metal on site. The key features of **XtractaBench** are a perforated downdraught work surface and housing for an extraction or filtration unit underneath. Dust and fumes are drawn directly away from the working area and a collection hopper is built in to catch heavier particles and dust. On the side of the bench is a convenient fold-down shelf to mount your M or H class vacuum for on-tool extraction.

UK Patent Application Number 1801105.6

 **armorgard**

**xtractabench™**

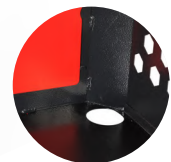
XTRACTABENCH



USED TO REDUCE DUST  
AND FUMES THAT ARE  
EMITTED WHEN WORKING  
ON MATERIALS

XB2

SECURE STORAGE SPACE  
PROTECTS AND SECURES  
THE AIR FILTRATION



EXISTING AIR  
FILTRATION SYSTEMS  
CAN BE PLACED INSIDE

EUROPEAN COMMUNITY  
DESIGN REGISTRATION  
NUMBER 005216066-0001

FOLD-DOWN SIDE SHELF  
PROVIDES A CONVENIENT  
LOCATION TO PLACE  
PLACE AN H OR M CLASS  
VACUUM FOR ON-TOOL  
EXTRACTION

FITS THROUGH A  
STANDARD DOORWAY

STRONG, ROBUST  
WORKBENCH, TO ENABLE  
THE USER TO WORK AT A  
SAFE WORKING HEIGHT





XTRACTABENCH IN ACTION



SECURE LATCH,  
TO FASTEN THE  
WORKTOP



LID SUPPORT  
FOR SAFETY  
PURPOSES



XTRACTABENCH

Product Code	Description	Weight	External Dimensions W x D x H (mm)	Internal Dimensions W x D x H (mm)
XB2	XtractaBench	96kg	1250 x 750 x 895	1145 x 565 x 555

Note: weights and dimensions are approximate. External dimensions include handles.

Get your Armorgard products today at [www.mrplanthire.co.uk](http://www.mrplanthire.co.uk)

The adaptable  
mobile on-site  
pipe and conduit  
storage solution

The **Armorgard PipeRack** is an innovatively designed wheeled storage rack that keeps your pipes organised and easy to manoeuvre while you're working on site. Each unit has been fully tested and certified to guarantee you a top quality product that is durable and built to last, while the fully collapsible design means that it can be easily transported and stored when not in use. **PipeRack** is available with either a 1 tonne or 2 tonne capacity.

# armorgard piperack™



**SIMPLE KIT**  
AVAILABLE TO  
UPGRADE FROM  
1T TO 2T

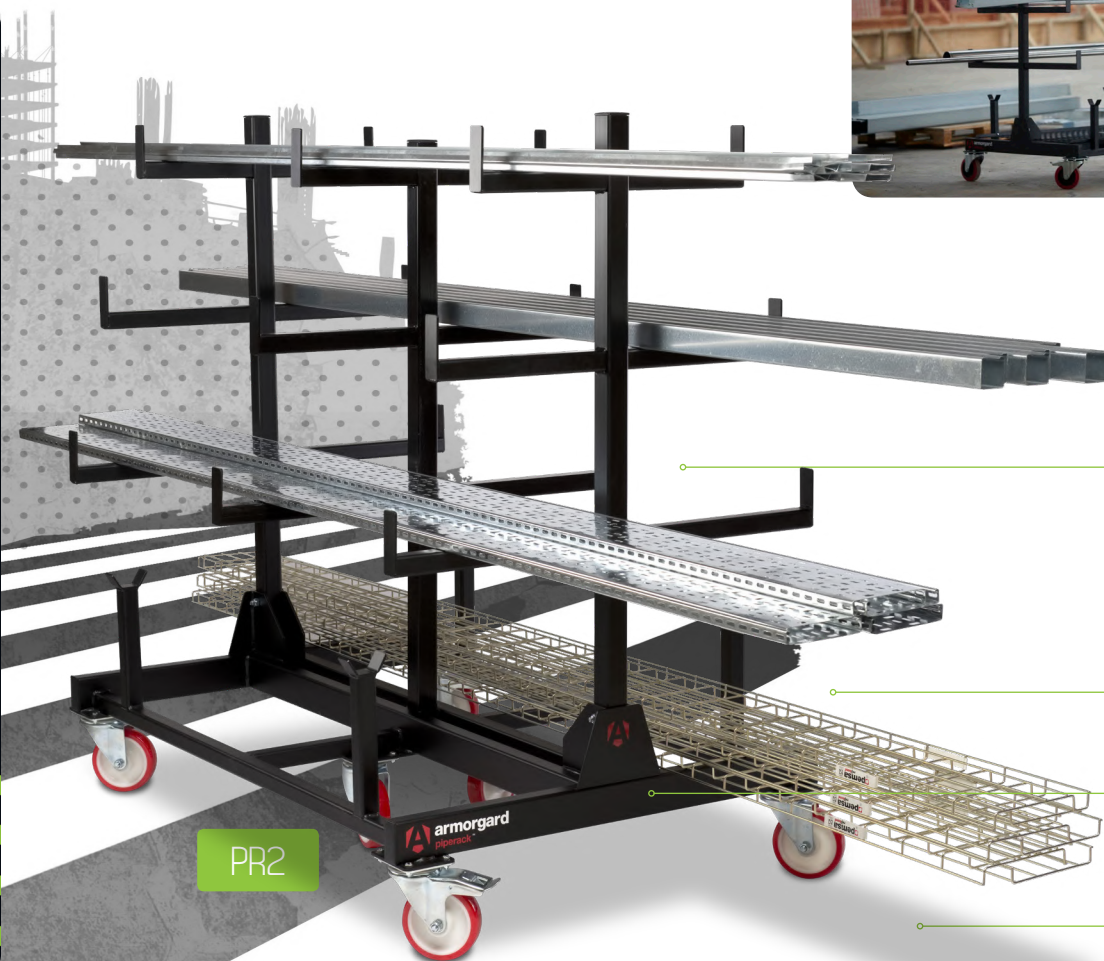
**ALL STEEL**  
HEAVY-DUTY  
CONSTRUCTION

**SERIAL NUMBERED**  
FOR CERTIFICATION

**STACKABLE**  
UP TO 6 UNITS HIGH

**POWDER COATED**  
FINISH FOR ULTIMATE  
PROTECTION

**UNIQUE FULLY**  
FOLDING DESIGN



Product Code	Description	Weight	External Dimensions W x D x H (mm)	Folded down Dimensions W x D x H (mm)	Weight loading
PR1	PipeRack	83kg	1000 x 1500 x 1560	Folded down = 1000 x 1500 x 545	1 tonne
PR2	PipeRack	101kg	1000 x 1500 x 1560	Folded down = 1000 x 1500 x 545	2 tonne
PRLK	PipeRack Linking Kit, to join 2 PipeRacks together	N/A	N/A	N/A	N/A
PRUK	PipeRack Upgrade Kit, to upgrade from a 1 tonne capacity to a 2 tonne	N/A	N/A	N/A	N/A

Note: weights and dimensions are approximate.

The mobile rack  
for easy transport  
and storage of  
large bundles of  
materials

# armorgard bundlerack™

The **Armorgard BundleRack** is a simple and effective means of transporting and storing large bundles of materials. It allows you to organise your materials on site to optimise space, while ensuring they are quick and easy to move when needed. Designed to a high quality heavy-duty specification, with an anti-corrosive finish, **BundleRack** is built to last. The unit can be folded and stacked for easy storage when not in use.



SERIAL NUMBERED  
FOR CERTIFICATION

ANTI-CORROSIVE  
POWDER UNDERCOAT  
FOR EXTENDED LIFE

ROBUST CONSTRUCTION  
AND WEIGHT LOAD  
TESTED TO CARRY UP  
TO 1 TONNE

INTEGRAL MESH BASE  
FOR CARRYING  
SMALLER ITEMS



FOLDABLE AND  
STACKABLE FOR EASY  
STORAGE

SIDE LOADING PROVISION  
FOR LOADING AND  
UNLOADING MATERIALS  
USING A FORKLIFT

POWDER COATED  
FOR MAXIMUM  
DURABILITY

HEAVY-DUTY  
SWIVEL WHEELS  
- TWO WITH BRAKES

Product Code	Description	Weight	External Dimensions W x D x H (mm)	Folded down Dimensions W x D x H (mm)	Weight loading
BR1	BundleRack	78.5kg	1005 x 1560 x 1010	1005 x 1560 x 550	1 tonne

Note: weights and dimensions are approximate.

Get your Armorgard products today at [www.mrplanthire.co.uk](http://www.mrplanthire.co.uk)



The unique  
space-saving  
trolley for  
transporting large  
sheets of board

**armorgard**  
**loadall™**

Save space, ease handling and protect your materials from damage using **Armorgard LoadAll**. Whether in the yard, on the delivery truck or on site, transporting large sheets of board has never been easier. Specially designed for storing and transporting plasterboard and other large-sheet materials, **LoadAll LA750** is the only trolley of its kind on the UK market that is easy to manoeuvre through doorways and turn the corner at the same time when loaded up with material, all because of its unique design.



**CENTRE A-FRAME DESIGN**  
MEANS THAT WHEN  
LOADED ALL WEIGHT IS  
LEANING INTO THE  
CENTRE

**NO DETACHABLE SECTIONS**  
- KEEPS UNIT TOGETHER  
AND PREVENTS LOSS OF  
PARTS

**CARRIES UP TO 24 SHEETS  
OF PLASTERBOARD**  
- APPROXIMATELY 60%  
MORE THAN ALTERNATIVE  
PRODUCTS

**FOLDING AND STACKABLE**  
UNIT - TIDY AND EASY TO  
STORE WHEN NOT IN USE

**PROVISION FOR  
STRAPPING**  
BOARDS IN PLACE  
- IMPROVING SAFETY  
WHEN ON SITE

LA1000

Product Code	Description	Weight	External Dimensions W x D x H (mm)	Folded Down Dimensions W x D x H (mm)	Weight loading
LA750	LoadAll	41kg	550 x 1350 x 1130	550 x 1350 x 300	750kg
LA1000	LoadAll	49kg	730 x 1250 x 1410	730 x 1250 x 495	1 tonne
LA1500	LoadAll	65kg	756 x 2100 x 1550	N/A	1.5 tonne

Note: weights and dimensions are approximate.



ONE PIECE DESIGN  
- NO DETACHABLE  
PARTS



PROVISION FOR  
STRAPPING MATERIALS



FOLDING / STACKABLE /  
NO DETACHABLE  
SECTIONS



HEAVY-DUTY CASTORS  
FOR EASY MOBILITY

## armorgard v-kart™

A heavy duty cart  
used for handling long  
lengths of material

The **V-Kart** is a heavy duty cart used for handling long lengths of material. Designed to make life easier for those manoeuvring pipe, steel sections and other lengths.



Product Code	Description	Weight	External Dimensions W x D x H (mm)	Internal Dimensions W x D x H (mm)
VK2	V-Kart	35kg	1220 x 840 x 900	N/A

Note: weights and dimensions are approximate.

Get your Armorgard products today at [www.mrplanthire.co.uk](http://www.mrplanthire.co.uk)

LOADALL

V-KART

Our multi-purpose  
Rubble Truck  
features an in-built  
tipping feature, ideal  
for handling waste  
and rubble

Ergonomically designed for maximum performance and efficiency, the **Rubble Truck** pulls on an array of unique features to create an indispensable onsite companion. Our multi-purpose **Rubble Truck** features an in-built tipping feature, ideal for handling waste and rubble, a huge 400 litre capacity scoop, extra strength crane lift eyes and solid rubber wheels. When the day's over the **Rubble Truck's** unique stackable design means you can maintain a working space that's safe and clutter free.

# armorgard rubble truck™

RUBBLE TRUCK



CRANE LIFTING EYES  
EXTRA STRENGTH  
WELDED



RUBBER BUFFERS  
FOR SIDE PROTECTION



EASY UNLOADING



RT400

BUILT IN  
TIPPING FEATURE

UNIQUE STACKABLE  
DESIGN

IDEAL FOR HANDLING  
MATERIALS, WASTE  
OR RUBBLE

SOLID RUBBER  
WHEELS OR  
PNEUMATIC WHEELS

ROBUST  
CONSTRUCTION  
ENGINEERED FOR  
HEAVY USE

400 LITRE  
CAPACITY SCOOP





RT400

**750**  
**KILO**  
**LOAD**  
**CAPACITY**

HEAPED LID TO FIT THE  
 RUBBLETRUCK RT400 TO  
 PREVENT ITEMS INSIDE  
 FALLING OUT

Product Code	Description	Weight	External Dimensions W x D x H (mm)	Internal Dimensions W x D x H (mm)	Weight loading
RT400	Rubble Truck	88.5kg	760 x 1460 x 855	675 x 1330 x 650	750kg
RT400L	Rubble Truck Lid	19kg	260 x 770 x 1405	210 x 580 x 1400	N/A

Note: weights and dimensions are approximate. External dimensions include handles.

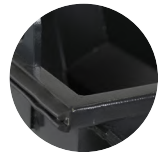
Get your Armorgard products today at [www.mrplanthire.co.uk](http://www.mrplanthire.co.uk)

Our space-saving,  
stackable, sturdy  
and ergonomically  
friendly unit

When you haven't got a forklift handy, **Flexikart** steps in as a safe, multi-purpose folding pallet skate. With a 1200kg payload, this super-neat and sturdy trolley is ideal for moving materials around busy construction sites and storing them off the ground throughout. The unit can comfortably accommodate 1200x1000 pallets. Plus, four folding arms can extend to accommodate longer items, such as boards or ducting. Four swivel castors (two braked) means the unit is easily manoeuvred in any direction, whilst lashing rings ensure you don't lose your load.

# armorgard flexikart™

FLEXIKART



A ROBUST PALLET SKATE WHICH INCREASES SAFETY AND REDUCES PHYSICAL STRAIN WHEN MANOEUVRING LOADS MANUALLY



ABLE TO HOLD 1200X1000 PALLETS WHEN ALL 4 SUPPORT ARMS ARE LOCKED UPRIGHT

ALL 4 SUPPORT ARMS CAN BE RAISED INDIVIDUALLY AS REQUIRED, AND WHEN NOT IN USE THEY FOLD BELOW THE BED HEIGHT

BUILT IN LASHING POINTS ALLOW LOADS TO BE SECURED, WHICH SAFELY PREVENTS THEM FALLING OFF WHEN MANOEUVRING

Product Code	Description	Weight	External Dimensions W x D x H (mm)	Internal Dimensions W x D x H (mm)	Weight loading
FK4	FlexiKart	84kg	1269 x 1172 x 1202	1269 x 1172 x 391	1200kg

The ultra-tough,  
lockable vault  
for storing  
hazardous  
chemicals and  
flammables

As well as exposing individuals to possible risk, failure to comply with regulations relating to the Control of Substances Hazardous to Health (COSHH) is an offence under the Health and Safety at Work Act 1974. Built to the same high specification as our renowned **TuffBank** range, the **Armorgard FlamBank** is specially designed to comply with all COSHH regulations, ensuring that your hazardous substances are securely protected 24/7. Available in seven sizes, the **FlamBank** is ideal for use on construction sites, in factories and vehicles.

# armorgard flambank™



FLAMBANK

Product Code	Description	Weight	External Dimensions W x D x H (mm)	Internal Dimensions W x D x H (mm)	Sump Capacity (L)
FB1	Van box	46kg	980 x 540 x 475	895 x 470 x 465	60
FB21	Site box	64kg	765 x 675 x 670	680 x 605 x 575	40
FB2	Site box	81.5kg	1275 x 665 x 660	1185 x 600 x 575	85
FBC2	Site chest	107kg	765 x 675 x 1270	680 x 605 x 1180	50
FBC4	Site chest	152.5kg	1275 x 675 x 1270	1185 x 605 x 1185	85
FBC5	Site chest	174kg	1585 x 675 x 1275	1500 x 605 x 1185	110
FBC8	Site chest	334kg	2370 x 985 x 1220	2350 x 895 x 1130	250

Note: weights and dimensions are approximate. External dimensions include handles.

Get your Armorgard products today at [www.mrplanthire.co.uk](http://www.mrplanthire.co.uk)





# forma-stor COSHH

Our new COSHH  
compliant,  
quick-assembly,  
modular storage units  
for the safe storage of  
hazardous substances

**Forma-Stor COSHH** is our innovative new modular solution for on-site, secure storage. Flat-packed **Forma-Stor COSHH** units can be constructed in around 10 minutes with very few tools and can be moved easily using built-in forklift pockets or lifting eyes. Galvanised panels fasten neatly together to provide a robust, weatherproof store that can be configured in numerous ways and sizes, starting from just 1m x 2m. Several HSE features have been carefully designed to enable contractors to meet COSHH regulations on-site.

FORMA-STOR COSHH

FR300-C

— MEETS RELEVANT  
LEGISLATION FOR  
STORING FUEL AND  
CHEMICALS

— CAN BE DELIVERED  
PRE-ERECTED  
— ADDITIONAL  
COSTS INVOLVED

— AVAILABLE IN 4  
STANDARD SIZES

HEAVY-DUTY  
RAISED OPEN  
STEEL  
FLOOR – ALLOWS  
SPILLAGES TO  
DRAIN DIRECTLY  
INTO SUMP

FULLY GALVANISED  
AND POWDER COATED  
FOR MAXIMUM  
DURABILITY

RELEVANT HAZARD  
WARNING SIGNAGE

HEAVY-DUTY DOORS  
WITH 5-LEVER  
DEADLOCKS AND  
JEMMY-PROOF JOINS



FORMA-STOR COSHH

Product Code	Description	Weight	External Dimensions (including protrusions) W x D x H (mm)	Internal Dimensions W x D x H (mm)
FR100-C	Forma-Stor COSHH	326kg	2075 x 1120 x 2255	1920 x 970 x 1960
FR200-C	Forma-Stor COSHH	476kg	2075 x 2075 x 2255	1920 x 1920 x 1960
FR300-C	Forma-Stor COSHH	588kg	2990 x 2075 x 2255	2840 x 1920 x 1960
FR400-C	Forma-Stor COSHH	730kg	3995 x 2075 x 2255	3840 x 1920 x 1960

Get your Armorgard products today at [www.mrplanthire.co.uk](http://www.mrplanthire.co.uk)

# Mr Plant Hire plc



## Head Office

120 Hertford Road, Enfield, EN3 5AX

Call 020 8351 3434 email [info@mrplanthire.co.uk](mailto:info@mrplanthire.co.uk)

## Construction Division

120 Hertford Road, Enfield, EN3 5AX

Call 020 8443 8805 email [cphiredesk@mrplanthire.co.uk](mailto:cphiredesk@mrplanthire.co.uk)

## Mechanical & Electrical

21-27 Stacey Avenue, Edmonton, N18 3PP

Call 020 8887 1401 email [mehiredesk@mrplanthire.co.uk](mailto:mehiredesk@mrplanthire.co.uk)

## IPAF & PASMA Training Centre

22 Stacey Avenue, Edmonton, N18 3PS

Call 020 8887 1405 email [lisa.bunton@mrplanthire.co.uk](mailto:lisa.bunton@mrplanthire.co.uk)

## Powered Access

8 Morson Road, Enfield, EN3 4NQ

Call 020 8887 1410 email [pahiredesk@mrplanthire.co.uk](mailto:pahiredesk@mrplanthire.co.uk)

Visit us at [mrplanthire.co.uk](http://mrplanthire.co.uk)

