

# NEWSLETTER

MPH | BUILDING FOR 2024



# Contents

Constructing with Precision	3
Powered Access Innovations	5
Mechanical Mastery Unleashed	9
Meet our new IPAF Instructor	12
Heating and Lighting	15
Amping up our Brand Identity	17
Where to find us	19





# Constructing with Precision

Dive into our latest construction equipment investments of the year, chosen to enhance your projects.

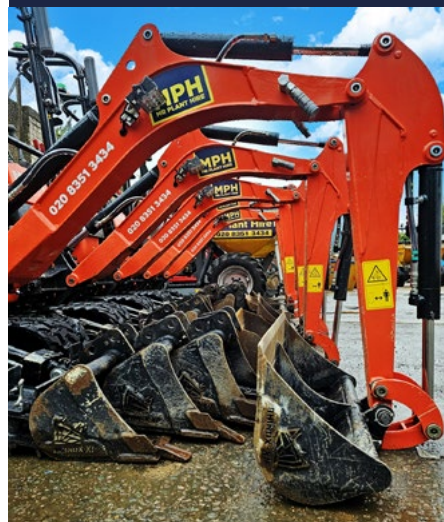
## KUBOTA 0.8m MICRO EXCAVATOR

The 0.8 Tonne Micro Excavator from Kubota (right) effortlessly navigates openings as narrow as 700mm (800mm with roll bar fitted).

With an operating width of 860mm, its hydraulic design allows the tracks to retract by simply manipulating a lever, optimising manoeuvrability. Renowned for its formidable digging prowess, this machine is the perfect choice for excavation tasks, from foundations to driveways and landscaping.

## 10m PETROL BUMPA HOIST

With 10m maximum working height and an 80kg maximum payload, our 10m Bumpa Hoist (opposite) is your go-to solution for quick, safe tile lifting. This powerful, petrol-driven device keeps roofers supplied with tiles for efficient, interruption-free work on both small and large projects. Don't need 10m? We also have 8m Bumpa Hoists for hire and electric models!



## MESSERSI TC50D TRACKED DUMPER

The Messersi TC50D (below) stands as a remarkable compact skip loading dumper, made for superior performance in areas with limited access. From private properties with restricted access to garden paths and challenging woodland terrains, this versatile machine shines. When manoeuvrability is paramount, the TC50D is your ideal choice, seamlessly combining convenience with top-tier performance.



# Powered Access Innovations

Earlier this year we made a shift in our Powered Access fleet by moving away from polluting diesel access equipment and investing in greener hybrid booms and electric rough terrain scissor lifts.

## WHY THE SWITCH?

This type of equipment is quieter, has a longer lifespan, and has less dependency on fuel. And with the UK's move away from diesel, we wanted to be ahead of the curve in offering the best electric and hybrid equipment solutions.

## BOSS PA-LIFTS

The BoSS PA-lift joined our fleet this year with its versatile solution for construction, maintenance, and more. It prioritises safety with features like proximity sensors and impact protection (available on demand). Its smart control technology minimises downtime, and with a 3.4m platform height, it suits various settings from office refurbishment sites to schools and hospitals. Accessories like the Confined Space Guardrail and Anti-Climb Guards enhance its adaptability and safety. Our commitment to efficiency is further demonstrated by the addition of the versatile DINGLI 5.6m and Genie 19ft scissor lifts.



## DINGLI 5.6m SELF-PROPELLED SCISSOR LIFT

Our 5.6 Scissor Lift is a compact electric scissor lift that easily navigates confined spaces with its reduced turning circle radius.

With a 5.6m working height, it's perfect for cleaning, maintenance, and racking access.

## GENIE 19ft SCISSOR LIFT

This versatile lift, with a remarkable 7.8 metre maximum working height, is a staple in low level access.

Its slide-out deck adds workspace, and foldable handrails prioritise safety and comfort for operators.





## PECO AND ECO LIFTS

Our Powered Access Division has taken delivery of more JLG Pecos and Ecos throughout 2023. These lifts are an eco-friendly solution for working at heights.



The Peco and Eco platforms are ideal for facilities maintenance work. Its dimensions allow it to fit easily down hallways and into most lifts. These machines do not require any power source to operate, freeing users from the hassle of charging batteries and providing a completely emission free solution, suitable for strict zero-emission, low noise environments.

For more information on our Powered Access equipment, please reach out to our dedicated team.





# Mechanical Mastery Unleashed

Explore the latest advancements in our Mechanical and Electrical equipment.

## UPLIFTER VACUUM CUP UPG350 GLASS LIFTER

Our team made a great investment in the Uplifter Glass Lifters at this year's Vetikal Days exhibition.



The UPG350 Glass Lifter is a versatile and user-friendly solution designed to handle a wide variety of materials with precision, safety features, and efficiency enhancements. Whether you're working on high-rise buildings, residential projects, or industrial facilities, this equipment adapts seamlessly to meet your unique project needs.

## KEEP YOUR SITE SECURE WITH AMORGARD

Our Armorgard site boxes offer a secure storage solution to keep your tools, equipment, and materials organised and safeguarded. With various sizes and configurations available, they're durable, weather-resistant, and equipped with mobility features. They are designed to enhance efficiency and security on your construction sites, ensuring your equipment stays safe and easily accessible.



## CONFINED SPACE EQUIPMENT

We recognise the inherent risks associated with working in confined spaces, be it manholes, lift shafts, tunnels, or pipes. In response to these challenges, we offer comprehensive confined space equipment.

Our commitment to safety is unwavering, and we provide only the most reliable equipment from industry-leading brands.

Whether you need a compressed air escape device, a gas detector, a tripod, safety harness, or other specialised tools, we've got you covered.





## Meet our new IPAF Instructor, Karolina

One of our most exciting developments in this year is the addition of a new IPAF training instructor to our team. In August, Karolina successfully completed a fast-track seven-week training course newly introduced by IPAF. This course equips trainees to become certified IPAF training instructors upon completion. We are proud to have her expertise on board.

### WHY THIS MATTERS

The construction industry has been evolving, and one of its key challenges has been increasing diversity and addressing the shortage of qualified training instructors. Our new IPAF training instructor represents a significant step towards addressing these issues.





## DIVERSITY MATTERS

We recognise the importance of a diverse workforce in the construction industry. It fosters creativity, brings fresh perspectives, and enriches our collective knowledge. Our new instructor's bilingual abilities in Polish and English contribute to making our training centre more accessible and inclusive.

## ADDRESSING THE SHORTAGE

The shortage of training instructors has been a pressing concern. By investing in our instructor's development through the fast-track course, we not only meet our own training needs but also contribute to addressing this industry-wide issue.



Our commitment to excellence continues to grow stronger with the introduction of weekend training sessions at our IPAF and PASMA Training Centre. Situated at our North London training centre in Enfield, this dedicated facility provides the ideal environment for comprehensive training.

We understand that your project time-lines don't always align with traditional weekday schedules, which is why as of this year we're excited to offer weekend training options. This means you can now access our industry-leading IPAF and PASMA training programs on your terms, ensuring that safety and expertise are never compromised.





# Lighting up your winter, keeping you warm and productive

As the calendar flips to the colder months post-October, MPH has you covered with an array of heating and lighting solutions to keep your projects running smoothly.

## ELECTRIC AND GAS HEATERS

Stay cosy with our selection of electric and gas heaters, including options like the Veab 3KW Fan Heater, Small-Large Space/Blow Heaters and the Rhino 3KW Infra Red Heater.

## SITE LIGHTING

When the sun sets early, our lighting solutions shine bright. Illuminate your worksite with our mobile lighting towers and industrial LED lighting. We offer an extensive range, from the Defender - Fluorescent Contractor Light with Power Take-Off Point to the Birchwood - 2ft Fluorescent Uplight, and more.



## WHY IS IT SO IMPORTANT?

Heating and lighting equipment is crucial in the winter. They provide comfort and visibility, making your work more efficient and safe. With our top-quality equipment, you can tackle the cold season confidently, ensuring that your projects shine brightly even in the darkest months.

Head to our website to check out our full range of heating, drying, cooling and lighting solutions.







## Amping up our Brand Identity

Over the past year, we've ushered in a fresh era of modernity by revamping our brand identity. This revitalisation included the introduction of a new logo, a revamped website, and the application of updated branding across our machinery and vehicles.

### A FRESH LOOK

We ushered in a new era with a brand-new logo that symbolises our forward-thinking approach. This updated image reflects our dedication to innovation and excellence.

### DIGITAL INNOVATION

We recognise the importance of online accessibility. Our website and customer-focused app provide easy access to equipment specifications and instructional videos. Now, our customers can conveniently find what they need and learn how to operate machinery with ease.

### UNVEILING THE NEW LOOK

Our machinery and transport fleet now proudly showcase the updated MPH branding. See one of our trucks out and about? Make sure to snap a photo if you can!



# Where can you find us?

## Head Office – Construction Division

120 Hertford Road, Enfield EN3 5AX

Tel: 020 8351 3434 – Option 3

## Powered Access and Training Division

8 Morson Road, Enfield EN3 4NQ

Tel: 020 8351 3434 – Option 2

## Mechanical & Electrical Division

21/27 Stacey Avenue, Edmonton N18 3PP

Tel: 020 8351 3434 – Option 1

[www.mrplanthire.co.uk](http://www.mrplanthire.co.uk)

