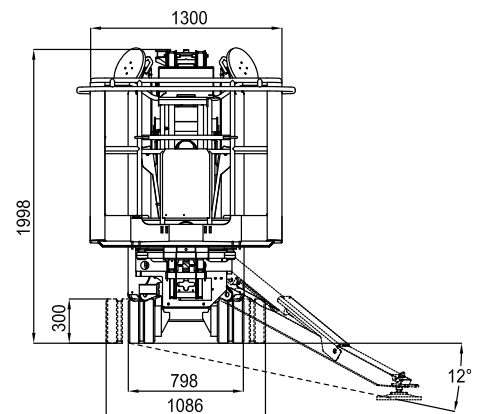
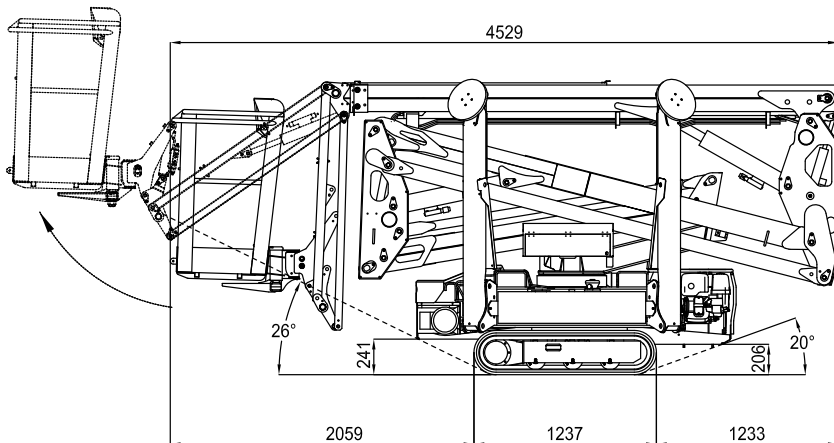
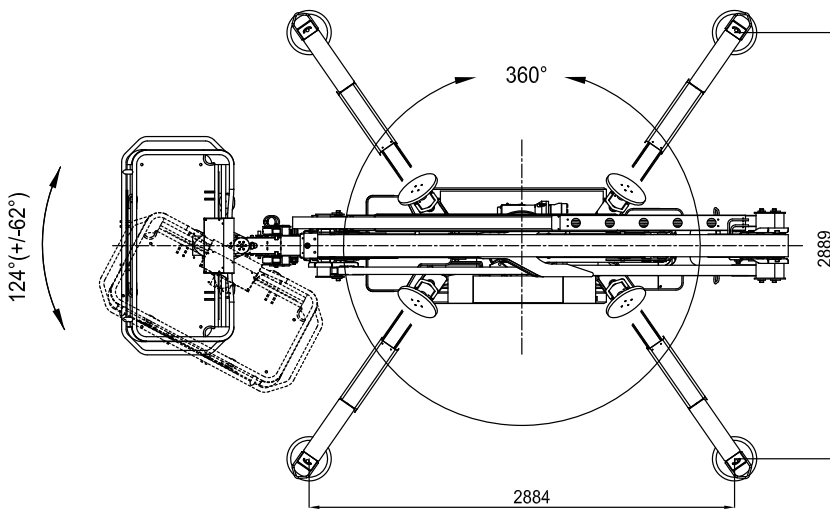


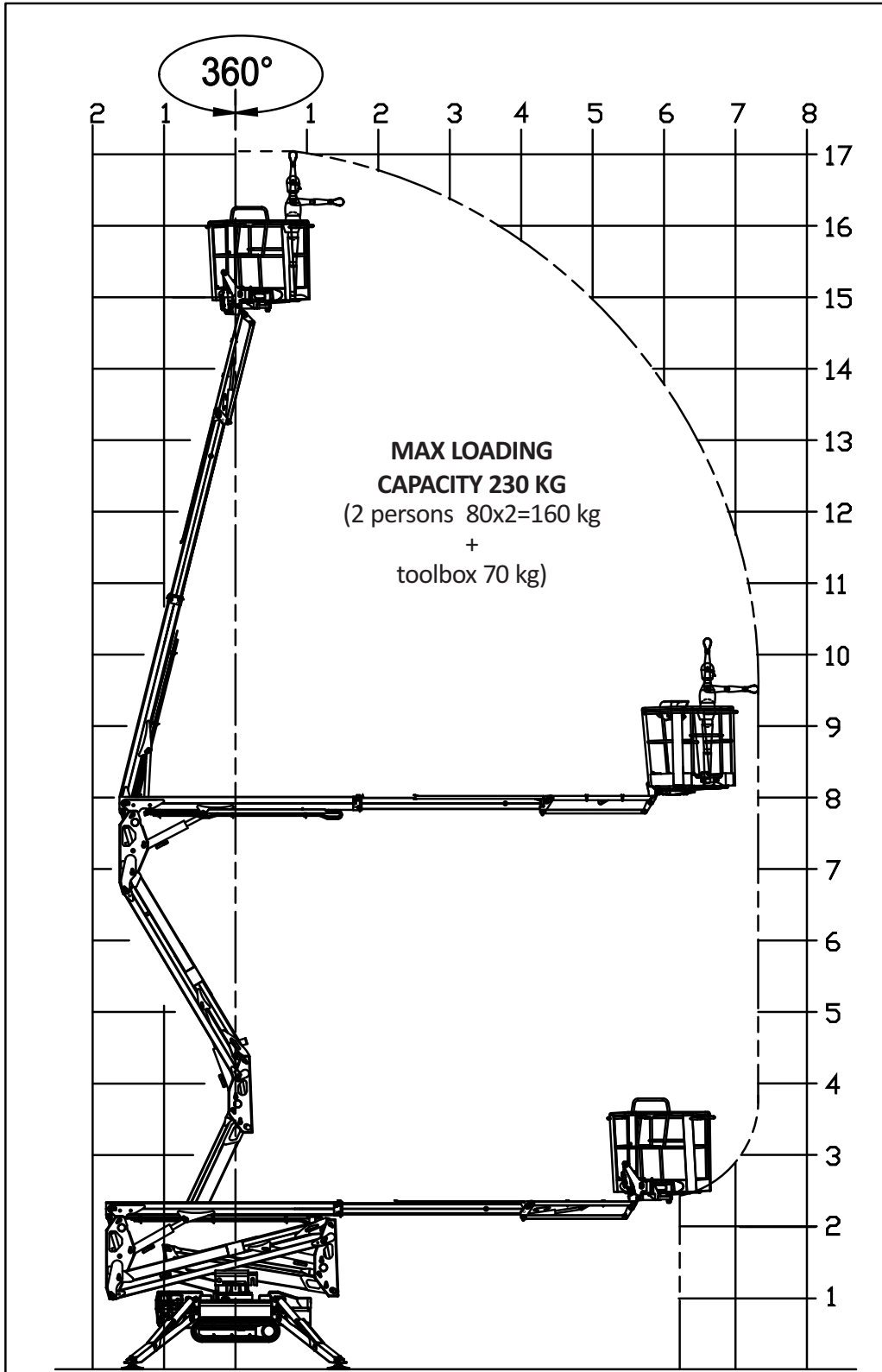
# LIGHTLIFT 17.75 *PERFORMANCE III MK2*



**SCAN ME** TO DOWNLOAD THE MPH APP  
EQUIPMENT INVENTORY | SPECIFICATIONS  
TUTORIALS | TRAINING | SUPPORT

**020 8351 3434**

# LIGHTLIFT 17.75 *PERFORMANCE III S MK2*



# LIGHTLIFT 17.75 PERFORMANCE III S MK2

## PETROL ENGINE

Brand.....HONDA  
Type .....iGX390  
Pistons no. and displacement .....single-cylinder 389 cc  
Max. gross power..... 11,7 HP - 8,7 kW @ 3600 rpm  
Electrical start ..... 12 volt

## DIESEL ENGINE

Brand.....HATZ  
Type.....1B40 - HD Autorev  
Pistons no. and displacement .....single-cylinder 462 cc  
Max. gross power. .... 10 HP - 7,5 kW @ 3600 rpm  
Electrical start ..... 12 volt

## ELECTRIC MOTOR

Standard .....230V / 50 Hz - 2,2 kW  
Optional .....110V / 50 Hz - 2,2 kW

## HYDRAULIC PUMPS

Pump diesel engine .....no. 2 gear pumps  
Pump electric motor .....no. 2 gear pumps

## TRACKED UNDERCARRIAGE

Track tensioner .....grease-filled  
Rollers no. per side .....3 + slide  
Widening system.....798 / 1086 mm  
Translation speed (petrol) ..... 1,4 km/h  
Translation speed (petrol) with optional high speed .....0,6 / 1,4 / 2,7 km/h  
Translation speed (diesel) ..... 1,8 km/h  
Translation speed (diesel) with optional high speed .....0,7 / 1,8 / 3,6 km/h

WEIGHT MACHINE ..... 2230 kg  
MAX UPPER SLANT .....16° / 28,7%  
MAX WIND SPEED ..... 12,5 m/s

# LIGHTLIFT 17.75 PERFORMANCE III S MK2

## LITHIUM ION

### ELECTRIC SYSTEM

Electric system voltage.....	48V-12V
Lithium battery pack.....	4,8 KWh
Autonomy (continuous cycle)*.....	4-5 h
Onboard battery charger .....	220V 50Hz
Optional battery charger .....	110V 50Hz
Recharge time on flat batteries.....	4 h (indicative)
Recharge time to 80% on flat batteries.....	2 h (indicative)

### HYDRAULIC PUMPS

Electric motor .....	no.2 gear pumps
----------------------	-----------------

### TRACKED UNDERCARRIAGE

Track tensioner .....	grease-filled
Rollers no. per side .....	3 + slide
Widening system.....	798 / 1086 mm
Translation speed .....	0,8 km/h
Translation speed with optional high speed .....	0,4 / 0,8 / 1,6 km/h

WEIGHT MACHINE .....	2300 kg
MAX UPPER SLANT .....	16° / 28,7%
MAX WIND SPEED .....	12,5 m/s

\* (Autonomy measured with Hinowa H2 operating cycle)

 @mrplanthireuk 
  mr\_plant\_hire 
  @mrplanthireuk 
  @mrplanthireuk

Head office: 120 Hertford Road, Enfield EN3 5AX | e: info@mrplanthire.co.uk